

FACE

Journeying with the Excluded

Annual Report

2017-2018

Girl Children Education

Holistic Education

Health Awareness

Women Empowerment

Emphasis on Rights based community strengthening

CONTENT

FACE....Growing with confidence	Page-1
FACE.....Introduction	Page-2
From the President's Desk	Page-3
From the Secretary's Desk	Page-4
Organizations Structure	Page- 5
Legal status	Page-6
Governing Board FACE	Page-7
Management committee and Monitoring Evaluation Practices	Page-8-9
An Overview of activities in the year 2016-2017	Page-10- 13
Our Program -----	
Girl Children Learning Centers	Page-14-18
Women Literacy for Education & Empowerment	Page—19-21
Entrepreneurship Development among women groups for economic Sustainability through Skill Development Training on Zarri work	Page- 22-23
Footprints to Emulate	Page- 24-26
Financials Audit Reports	Page-27-33
Get Involved	Page-34
Transparency Disclosures	Page-35

FACE: Growing with Confidence

The organization has been involved in social welfare activities especially in the field of Education, Health, Women Empowerment & Leadership development for the last eighteen years and has been making all possible efforts to accelerate its activities in this direction to find sustainable answers to uplift the conditions of excluded communities through community-based programs, participatory approach by building support based integrated partnerships by making interventions through a range of efforts, and facilitating a condition to open various opportunities for deprived people to address their needs and improve their conditions. FACE, at present, is working with rural children girl & women with primary secondary education programs, supplementary learning and comprehensive reading skill programs in government schools through various government and non-government initiatives mostly in the district of Pakur Jharkhand India.

Our vision

FACE aims to envisage an “**Empowered and Enlightened Society**” where every child can get education and enjoy its basic rights, where no excluded communities remain deprived.

Our Mission

To work and create a self reliant, equitable, value based and educated society by means of social transformation initiatives for empowerment of girl children, women, and deprived communities by addressing educational needs and rights based deprivations faced by excluded children, women and communities by bridging the gaps through association, partnership and collaboration.

FACE – An Introduction

The organization Foundation for Awareness Counseling and Education (FACE) was established as a non Government Organization on 14th January 2002 and registered under the society Registration Act, 1860. It has been engaged in various educational and community welfare activities ever since mostly in the district of Pakur, Jharkhand.

FACE came into existence when some like - minded enthusiastic people came closer to form a group to work together to provide relief to the victims of devastating flood in the district of Pakur bordering West Bengal. Encouraged by their efforts they vowed to volunteer their time and efforts to work in the field of social welfare and engaged in organizing relief and blood donation camps during natural calamity and accidents of magnitude, with the time they started organizing awareness camps against different social evils and superstitions engulfing the ignorant and illiterate mass of the countryside. They took their efforts a step further to arrange the provision for medicinal help especially to victims of disease of epidemic nature and to the victims of dog bites and snakebites.

FACE focused its activities for alleviation of deplorable condition of women and children and poverty among excluded rural communities in general. Face has set about its task in the remotest corner of the state of Jharkhand. This was the beginning journey of FACE. The basic tasks of the organization are eradication of illiteracy and upliftment for socially excluded community. In the last seventeen years we have been associated with various government and non government agencies through various programmes. Our current Projects -- **Girl Children learning centers.**

FACE headquarter is in the District town of Pakur at the North Eastern strip of Jharkhand. Pakur is still inhabited by schedule castes tribes and minorities living life in complete woes and disarray. The socio- economic development is clouded by the curse of illiteracy, superstitions, myths and poor condition of socially backward community.

From the president's Desk



It is my pleasure to present 17th Annual Report of FACE for the year ended 2017-18. There are many ups & downs, new experiences, revelation and challenges throughout the year. However, we never looked back and continued our efforts with a positive approach. At the end I could say this with proud that we have succeeded in achieving our targets set for the mission and completed all our ongoing projects in time.

The memories of various stages of our seventeen years of journey as an organization from the period of babyhood to present stage of comparatively matured phase have been encouraging. Our steady evolution is a matter of satisfaction for all of us as an organized team dedication to the cause of social welfare and empowerment of excluded people, for strengthening of weaker sections of marginalized society.

The path, right from the very beginning, was embedded with challenges and hardships but through our collective efforts we could cross all barriers and obstacles and have reached this far. With our continued interactions with various partners, social groups, stakeholders, government departments, funding partners, supporting agencies and various likeminded organizations with common theme, we could develop a firm ground and focus approach to work for the under-privileged sections of society.

In our activities during the last one year we mostly focused on education of girl children by building partnership with IIMPACT, Gurugram and presently running 60 Elementary Education Centers for Girls in 60 Villages of Pakur Block of Jharkhand. We have worked in the field of skill development for livelihood; Right based awareness and health awareness. The theme and purpose of all these activities were widely shared to bring to light all these issues from grassroots to higher level of policy makers.

It is my earnest urge and I really wish and resolve my commitment that as an organization we will continue with all these activities reinstated zeal and drive for the cause of the weaker sections. Our learning till date would guide us walk ahead with renewed confidence and to strengthen our capabilities further.

May I solemnly express my goodwill and deep sense of respect to all community people, Governing Board and staff members, government and non-government agencies and organizations, and all other well-wishers for believing in us, supporting us and keeping our spirit high during our difficult times so we could face those challenges! All of them have been the real players and live wire of all our interventions.

From the Secretary's Desk



The Year 2017-18 is the seventeenth year existence of FACE and we continue to work for the excluded community with various projects like; Education, Health, Women Empowerment, Leadership Development and grass root awareness building. This year was more focused towards Girls children Education for the disadvantaged group of society.

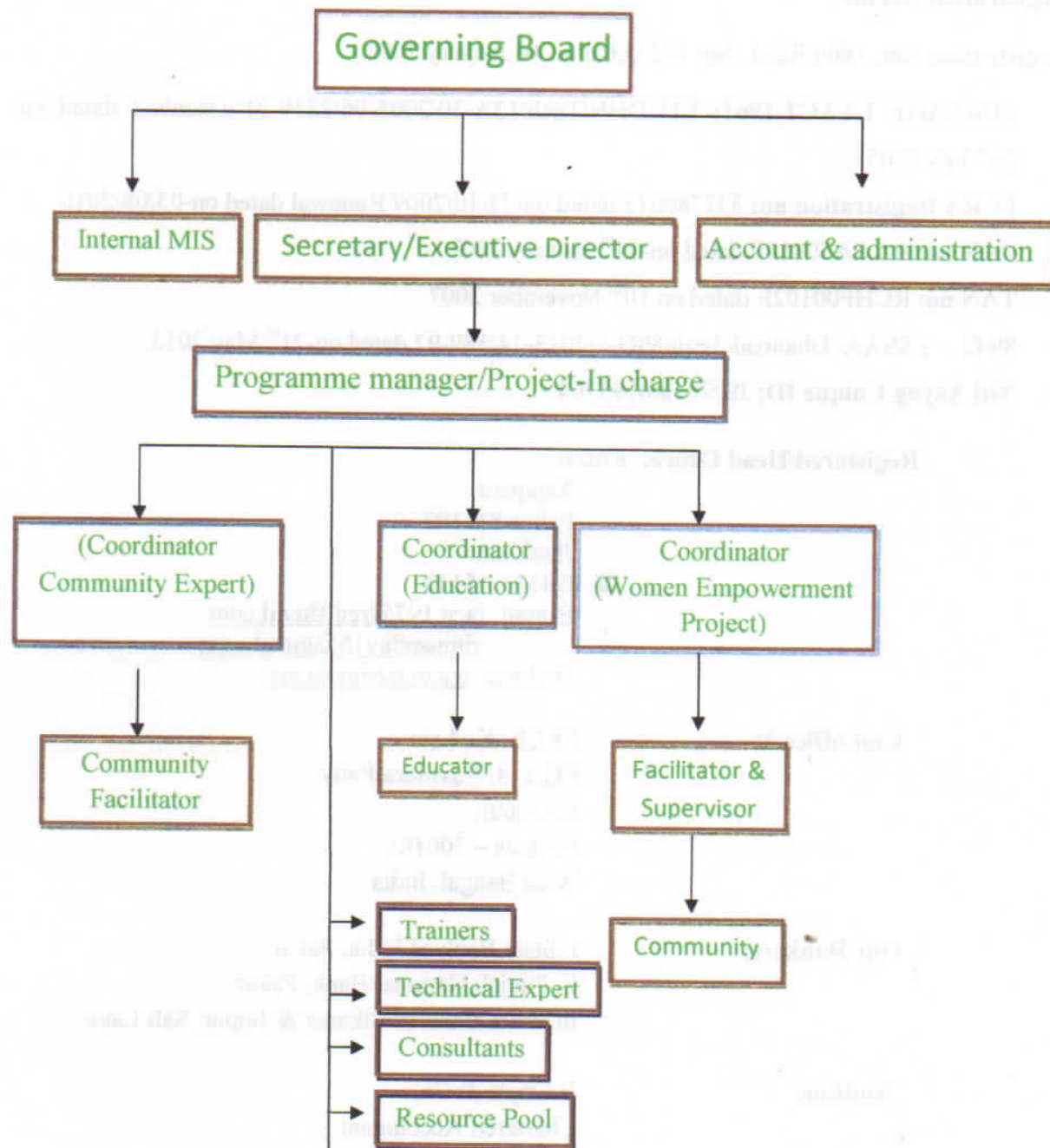
It has succeeded at the community level to create an atmosphere to raise the demand for the girl children education. The reach of FACE has become much wider large number of villages has been covered through girl children learning centers. It has worked partnership with IIMPACT, Gurgaon and proved its presence and potential of girl children education.

We emphasized in strengthening the internal leadership and skilled individuals leading FACE and we set a new benchmark for ourselves by reaching out to cover 7000 children including girl children, adolescents and adult women. Our organization enters into seventeen years in 2017 with a remarkable confidence with sharpened clarity through improved knowledge and talent based approach.

FACE has always believed that the power of knowledge is being transformed to community and that empowered community gives valuable involvement and contribution to the society. The entire organization along with our Governing Board and external stake holders worked jointly in a participatory manner to work with our priority of educational areas and plans to upscale our impact over the next years.

Finally I would like to thank whole team of our organization-who worked hard in demanding environment to improve the education of the most vulnerable women & children to take up closer to our vision. We have a dream that each and every girl in the rural and excluded community get proper and meaningful education and become responsible and knowledgeable women at community level.

Organizational Structure



Legal Status

Registration Details:

Registration Act, 1860 Regd. No: 192 dated on 14 January 2002.

- **12A/AAOF I.TACT,1961:** CIT/DHN/Tech/12A-30/2005-06/2219-21 Dhanbad dated on 29th July 2005
- **FCRA Registration no:** 337780015 dated on-22/10/2009 Renewal dated on-03/08/2016
- **PAN no:** AAAAF0410E dated on-14th January 2002
- **TAN no:** RCHF00102E dated on 10th November 2007
- **80 G** : SSAA/ Dhanbad/Tech/80G-7/2013-14/589-92 dated on-21st May 2013
- **Niti Aayog Unique ID:** JH/2018/0195764

Registered/Head Office: FACE

Rajapara,
Pakur-816107
Jharkhand

☎ 094311-65148

E-mail: face.197@rediffmail.com
ritupanday16@gmail.com

Website: www.faceindia.net

Unit office 1:

FACE- Kolkata
BG 114, Ravindra Pally
Kestopur,
Kolkata – 700101
West Bangal, India

Our Bankers:

- i. State Bank of India, Pakur
- ii. Punjab National Bank, Pakur
- iii. State Bank of Bikaner & Jaipur, Salt Lake

Auditor:

B.Gupta & Co,
Chartered Accountant
Patna, Bihar

Our Gratitude to our Donors

IIMPACT, Gurgaon

Governing Board

NAME	DESIGNATION	ADDRESS	OCCUPATION
Mr. Sharique Hayat Khan	PRESIDENT	Thanapara, Pakur	Social worker & Pedagogy Consultant
Mr. Vidyasagar Choudhary	VICE-PRESIDENT	Tantipara, Pakur	Social Worker
Ms. Ritu Pandey	SECRETARY	Rajapara, pakur	Post Graduate Program Development Management & Clinical Psychologist
Mr. Debobrata Sinha	TREASURER	Thanapara, pakur	Social Worker & Financial inclusion Consultancy
Mr. Ratan Singh	MEMBER	Bank Colony, Pakur	Social Worker & Secretary, Dist. Sports Association
Mr. Birendra Pathak	MEMBER	Tinbangla, Pakur	Social Worker & District Sports facilitator
Mr. Chanchal Jha	MEMBER	High School Road, Pakur	Social Worker & Education Trainer
Ms. Rosa Soren	MEMBER	Gokulpur, Pakur	Social Worker & Community Facilitator
Ms. Atreyee Chandra	MEMBER	Garia, Kolkata	M phil in Clinical Psychology & Special Education Trainer

Managing Committee

The managing committee comprising of President Secretary & Treasurer has been delegated the power to carry out day to day organizational activities and has been given the power to decision making related to any ongoing project activities

Monitoring and Evaluation practices

Effective and efficient use of available resources is of utmost importance for meaningful and productive impact of community based activities. It is also a guiding mirror for the organization to see if activities are undertaken in a systematic manner. Top-down and bottom-up method of activity based directions and related information collection of the process and methods of implementation and their observation and evaluation keep a project moving in a planned manner. Therefore a well designed process of monitoring and evaluation is the livewire of the organization. It ensures better functioning, better performance for authentic result. Before we undertake an activity we have a clear vision that what achievement is expected to be seen at the end of the project. We work by developing some specific questions and the strategies and activities to be followed giving emphasis on all important ingredients of the Theory of Change to bring out the best from the programs being implemented i.e.

- Why is the activity needed?
- What is the content of activity?
- How that activity to be taken up under sub-activities?
- When & where about activity details?
- What is the methodology for activity implementation?

In the light of all these a monitoring & evaluation pattern is developed project wise for systematic functioning and ascertaining the grey areas. We follow the following specifically -- we give emphasis to anticipation of problems, listing of problems, approach to solutions, and learning areas. We are also specific about various activity related measurable indicators and determining the whole process through scale and frequency, fixing roles and responsibilities and monitoring in the same line, determination of the process to use the information gathered and the analysis and comparing it to the set benchmark, formatting the document into formal process, and undertaking rigorous and stringent monitoring at field work.

This is a very important and valuable working system of the organization. This does not only bring into light any discrepancies but also creates a sense of responsibility and accountability among the team.

The monitoring system is led by the secretary/project manager. Each project has field level coordinators and cluster wise supervisors who do the monitoring as well their work according to work plan. The project team has been trained well to make them well versed in their activities. Project related documentation has been systematically maintained both at centers and head office. The organization's resource pool, consultant and pedagogy experts form the core of internal monitoring system. Monthly meetings which are conducted in each project are taken to assess the progress.

The account officer is in charge of the account section. There is a systematized system of accounting manual and followed to record proper cash inflow and outflow.

Educators are involved in educational management of the centers. Facilitators can directly intervene in the community activities. Documentary management of the organization has well defined system of reporting and recording each area of activity.

Project based capacity building session/training has been conducted by the pedagogy expert. Registered are kept by field coordinators and monitored by the external resource pool. Quarterly project documents and its outcomes are finally scrutinized by the Secretary/project managers with project in charge, supervisors and coordinators.

An overview of Activities

This year the focus of our activities has been on widening the educational activities for children, special attention to girl education, learning cum life skill programs for rural women, exposure visits for children and women, residential training and capacity building of project team, youth, educators, community awareness on health, education, legal rights, community linkages with government departments and government services.

- Girl Child Learning Centers

These centers are functioning in target villages of Pakur block. They cover girls from difficult conditions who are either drop out un-enrolled and irregular. Our primary target is to ensure quality based primary education for these girls so that they could continue their further education.

An observation of the rural pockets especially the target regions is enough to reflect the disturbing picture of negligence the girls undergo - withdrawn from schools for household chores, early marriage, made to drop out from mainstream education because of community tendency of not letting them mix with the boys after a certain age Girl children education is very effective program for community girls.

Presently we have been actively working in running 60 Girl children Learning Centers, and strengthening village based platform for community based interactions for awareness building on a number of issues such as available facilities and services, rights based issues, health and education issues, linkage with government departments, social groups, partnership with various organizations, communication with media. We are able to reach out to 5000 girl children, women, youth & community people and cover them through our programs and activities for them to reap the benefit.

- Skill development income generation activities

FACE is successfully running skill development activities on zarri and embroidery work. At present these programs are being implemented in North 24 Parganas district of West Bengal. The efforts are being made with a view to economically empower rural women to professionally find ways to income generation to attain self reliance.

As a matter of fact the keenness, enthusiasm and interest in learning the skill shown by the community women and the quality of performance shown by them are very heartening. The

trainers are trying to do their best in professionally making them confident with skill and future marketing activities so that their learning was not remain unused rather they could professionally interact the market requirements, financial linkages and production activities to have a successful start.

- **Legal Awareness A doorway to community empowerment**

There are various legal rights, cover and protection for excluded rural communities because of ignorance and absence of legal awareness, excluded and marginalized weaker sections are not able to make use of these facilities.

Under a broad based flagship program access to justice launched in 2009, DLSA have undertaken extensive legal awareness camps in rural pockets of Pakur district and FACE feel keen to play active partnership role in legal awareness camps.

The program facilitates activities related to legal awareness, legal aid and capacity strengthening of community towards access to their right. The program covers child rights, awareness and entitlements for marginalized people including women, children, and people living with disabilities, scheduled castes, scheduled tribes and minorities.

- The highlighted community Rights & Legal Awareness issues raised and emphasized includes

- Rights to equal opportunities for people living with disabilities
- MNREGA
- Divorce Mental health
- Child marriage
- Dowry
- Right to inheritance and property
- Juvenile justice Act & Child in need care & protection 2016
- Rights of SC & ST
- Migration of labor,
- Kidnapping, Trafficking, and Immoral Trades,
- Health services and delivery,
- Domestic violence against woman,
- Bonded and contractual labor,
- Working condition for labor Sex trafficking Child labor
- RTI,
- Untouchability
- Maternal Health
- Adolescents Reproductive & Sexual Health
- POSCO Act

- Health Awareness program for rural community women and Community in general

Health at best can be defined as a state of complete physical, mental and social well-being and not merely the absence of disease. Reproductive and sexual health and hygiene means to address the reproductive processes, functions and system at all stages of life. It must imply that people are able to have more responsible, safer and well informed sex life and practices. It means that men and women must have information on access to safe, effective, affordable and acceptable methods of birth control and also have access to appropriate health care services. It must imply to cover people under health education program to make women know to go safely through pregnancy and childbirth and to have the best chance of having a healthy infant.

This programme mainly touches the lives of women, children and their families. It aims to teach them to handle the pregnancy and other related health issues. Due to lack of information on these issues the women and girls suffer for ill health which proves a burden for their family and the society. There has always been a problem with the health of women right from their childhood, puberty and pregnancy till their menopause. These health issues are discussed and explained and the excluded women who are generally illiterate and under develop. Through this programme Reproductive and Sexual health information is passed to the women in very effective manner for the good health. These programme are meant to make the women aware of the contraceptives, management of pregnancy and understanding the stage of menopause.

Our program

Girl Children Learning Centers



The community inhabited pocket is under crippling overpopulation that strain their resources and deprive them of their basic human rights, and make the day to day living a continuous struggle. Because of the overpopulation landholding of each agricultural family reduces from generation to generation and livelihood opportunities continue to decrease. Agriculture still is the backbone for sustenance, but in places where families do not possess sufficient land for livelihood, they need alternatives and the ways to learn and earn from other sectors. Education is perhaps the only and the ultimate means for the improvement in their conditions.

Therefore it is envisaged that a project based educational intervention at the grass root level for girl child of primary education (I to V) may serve the beginning to address Status of girl child education as observed. While intervention and interaction with the community and minute observation of problems facing the girl children the most noticeable real experienced is glaring

negligence of educational needs of girl children in early childhood that results in children making very poor beginning in formal schools and they remain mere visitors to school without any proper learning.

Girl children is a foundation of the family as well as community need for basic and primary education and lifelong learning and development, addressing the educational needs of girl children must find the priority. If the girl children are not properly taken education it is adversely affects a development. Due to house hold chores, taking care of their siblings earning for their family and early childhood marriage are the major hindrance of girl children education. Need to generate demand of girl's education in family as well as community. Outline plan for setting up learning centers in each village and its activity

- Community meeting for learning center
- Enlistment of girl children
- Selection of educator& supervisor
- Place selection for the running learning center
- Field verification/ observation of enlisted children
- Meeting with their parents

Activities Undertaken

Mainstreaming—

After completion primary education till class V girls are mainstreamed into formal education for continuing their higher secondary level education so that they can get a meaningful education that will empower them for better prospects.



Exposure, Participation & Celebration—

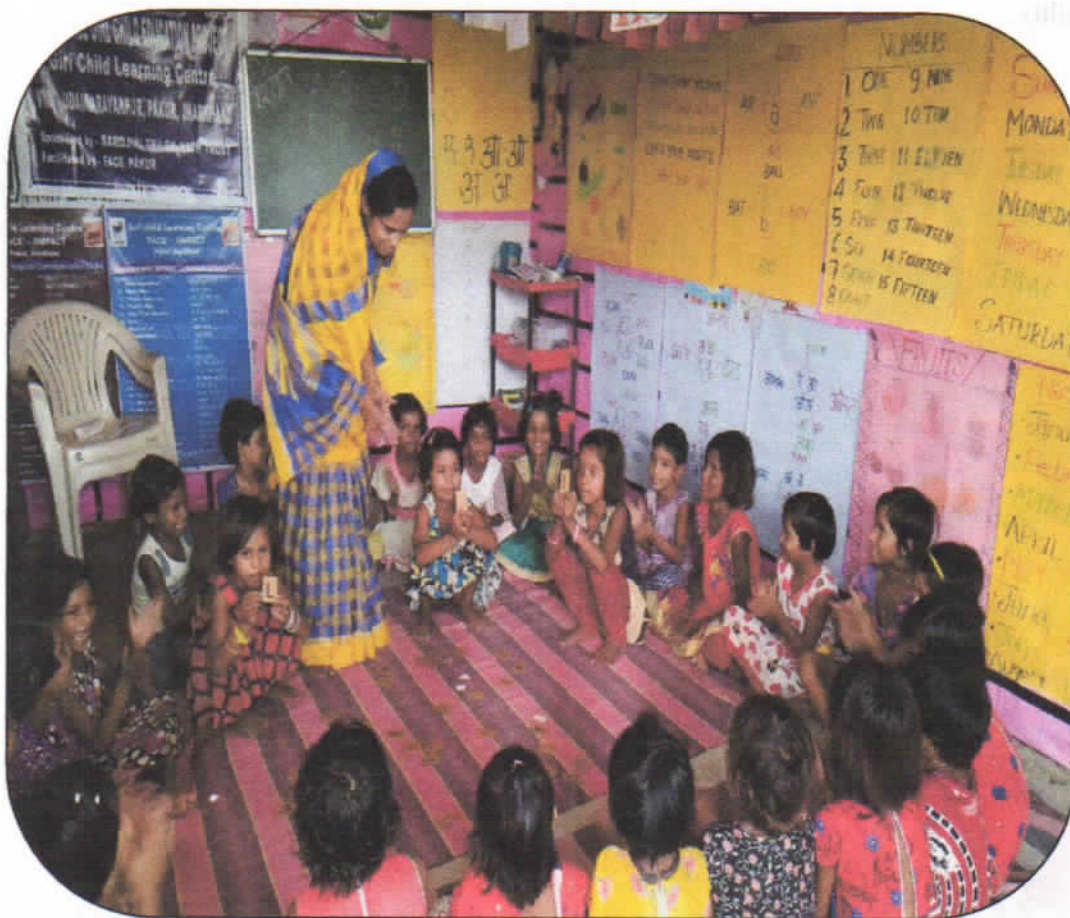
Ensure their basic rights and emphasis is learning centers given to ensure various kinds of learning based exposure to these girl children develop a sense of confidence and to be aware of the realities around so that they can accelerate their efforts to be at par with the outside world. They are also given exposure at district level programs to exhibit their ability in reading, writing, dictation, Rhymes, debate & Dance Drama. They accolades and appreciation they get encourage them to raise their efforts.

To inculcate a sense of moral values and respect for nationalism and humanism all important days and occasions such as all National days, Mothers day, Environment day, Teachers day are celebrated among girls and their communities ensuring their active participation to initiate sustainability.



Joyful Learning & Extracurricular Activities—

In primary education it is very significant that children have a good start where they can enjoy their learning because this provides them the basic boost. Hence creation of joyful learning environment at centers has been our focus. Use of proper teaching - learning material for interest based learning, Peer group learning dance and song activities, play way methods and teachers active participation are specifically ensured. Healthy rivalry and a spirit of competition help in bringing out the best. Hence, inter centre competitions are organized and the girls from one center are taken to another center such competitive activities for the encouragement, motivation & development of children through competitive excellence.



Women's Literacy for Education and Empowerment

Functional education for women and adolescents are organized in SHGs and members of school management committees. The rural area is in backwards pockets of Jharkhand with a high concentration of Muslims, tribal and backward castes. Many of the women have never been to school and have been striving to improve their lives by educating their children. They have been demanding literacy to improve their opportunities for empowerment and leadership. Sustained grassroots work has enabled the women to participate in activities in their villages and communities, but they are restricted due to the lack of education. Women require literacy for functional use in daily life as well as to enhance self-worth. The organization is working towards overall improvement in the lives of the families involved in the project.

Pakur district is predominantly populated by Muslims and tribals (Pahariya and Santhal). The eastern and south-eastern regions of Pakur block is dominated by Bengali speaking Muslims, a majority of whom live in extreme poverty, and reflect a grim reality of marginalization and exclusion. With poor education, no modern amenities and poor living conditions, the people still follow traditional ways of life. The people are mainly engaged with agriculture and manual laborers working on farms. In recent years, the community has been making efforts to improve their living conditions. The community demands literacy and education as the key to development. FACE has organized women forum in community for SHGs, have been able to promote savings, awareness on health rights, child rights and educational rights and been able to generate a confidence and motivation among them to learn.

Goal and Objectives

FACE has been providing literacy for women through appropriate curriculum and specific methodology and enabling women to function in a literate environment with confidence.

The objectives of the proposed project are –

- Provide functional literacy and education opportunities to SHG in community women belonging to the marginalized sections of society
- Evolve learning strategies that make connections between Literacy, Education, Leadership Development and Empowerment.
- All the women involved to get functional literacy, Level- A, B & C women graduate to advanced literacy.

- Prepare women for community participation and lead the development process at community level



The project has implemented to a structured series of educational activities with Adolescents and women in 18 years to 45 age groups, including Basic education, Advance education, exposure visits, development of relevant curriculum in local language, peer group learning and improving life skills and awareness. The logical flows of the program are as follows –

- Project preparation and community mobilization
- Training and capacity building of personnel, volunteers and community stakeholders
- Establishment of study centers and implementation of structured learning program
- Continuing education and capacity building of learners

Guiding Principles–

- Acknowledge the intrinsic value of functional literacy
- Baseline & Need Analysis
- Accountability and Ownership by women's institutions
- Locally contextualized issue
- Sustaining literacy
- capacity building of literacy personnel
- Emphasis on monitoring and reflection
- Focus on Innovations
- Sharing on Critical knowledge & Lessons learnt

Approach to Literacy–

The meaning of what constitutes literacy and numeracy has evolved over the years to encompass more than just mechanical decoding of alphabets and numbers. There is, therefore, no universal definition of literacy. In fact, one finds a wide variety of definitions being used in policy and program documents across countries and programs. The meaning one ascribes to literacy and numeracy often depends on contextual specificities and the approach to literacy one is adopting.

Literacy as skills

Literacy as Tasks

Literacy as social practices

Literacy as critical reflection and empowerment

Entrepreneurship development among women groups for economic sustainability through skill development training on Zarri work

The project aims to reflect a departure from the beaten line of merely extending training support to women groups for income generation. Through the field experience it has been closely observed that merely providing training does not serve the ultimate purpose at all.

If economic empowerment of women is viewed in a consolidated and holistic form, it must realistically be accepted that such groups of women must toil through various stages of phase wise development and support and at the same time they are needed to be developed into well-orchestrated unit with dedicated approach towards realization of objectives. They must be gradually prepared to share responsibility, accountability, ownership and financial responsibility.

Hence, instead of seeking only grant for skill training the project has been designed to seek loan for production so that the gaps between the training phase and production & marketing can be closed and the women should be developed as a more sincere and active groups functionally involved in production & livelihood activities.

Strategy- The project step wise, phase wise plans to work under the following strategies to achieve desired project objective of practical, fruitful and sustainable economic growth of target women –

- i. Formation and development of involved, resilient, viable, energetic and cooperating women groups
- ii. Skill, production and marketing training
- iii. Hand-holding on production, marketing, finance management, loan return and earning sharing
- iv. Seller – buyer meet
- v. Extended phase of technical & non-technical support

Feasibility:

- i. As the target regions of activities are very close to the city of Kolkata the quality produce materials through tailoring and Zarri shall always remain in great demand
- ii. Technical experts, consultants and trainers will be easily accessible in the city
- iii. Raw materials and machines required are easily available
- iv. There is no dearth of skill among women in the target areas as they have been benefited through initial trainings in the past
- v. They can be provided learning exposure to various production and trade houses in the vicinity
- vi. Periodical seller – buyer meet can be easily arranged



Footprints to Emulate....

In the development sectors we have been providing holistic model of education for the socially excluded communities for promotion of education by undertaking various education program i.e. Early Childhood Education, Primary Education, Secondary level Education, Adult education with emphasis on functional literacy and livelihood skill development education. Education is the backbone for quality and meaningful progress of human beings and without education we cannot develop as human societies. Air, water, food, cloth & home are essential for survival but we must understand that education is equally essential to all human beings. In the context of Pakur district we must know that it is the second most backward district in India. So we are keen to focus on holistic and wider models of education so that the blot of illiteracy could be wiped out. For the last seventeen years FACE has imparted education to 10000.00 children and mainstreamed them into various government and private institutions and as a result of our efforts about 200 girls and boys are today professional adults working in various sectors. Here we have highlighted some case studies of those who motivated & inspired us to do more work for the community and to bring them to the mainstream of society.

Ismail Shaikh ... A role model for children and community



Ismail Shaikh son of Sentu Sheikh was born on 18th April in 1998 in Pakur District at Deotalla in a poor and uneducated family. In his childhood he never used to go to school. When he was 7 year old he started little earning to help her parents. When CARE project team in 2009 was doing the survey for admission of never enrolled and dropout children

In a short period of time he completed his primary level, hence he was in the CARE learning center, Ismail's parents contacted the CARE educators and Ismail was duly enrolled in the CARE centre. enrolled in K,K,D,M high school Jhikarhati where he continued his education and passed the matriculation in 2015 and intermediate in 2017 from Raj+2 Pakur. He is a student of B.A 1st year now. He also works as a tailor to support his family and meet the expenditure of his education. He also supports the education of his siblings. He is fond of social works so sociology is one of his favorite subjects. He has a desire to do something creative for his community and society especially for the children of the community. During the Elementary education project as the part of the project activity Ismail was mainstreamed in class VI but his progress had been followed up sincerely by the organization and was continuously tracked and given all necessary learning support and he is still in his graduation. As an organization we wish to him all possible help for higher education so that he achieves his goal and become a good role model in his community, children in particular.

Ismail's case is very encouraging that reflects poverty and excluded conditions are difficult but they cannot be barrier for education if commitment is there!

Firoz Ahmad An inspiring source of motivation to community



Firoz Ahmed alias Gama is a sixty five year retired teacher from village community from Sangarampur village of Pakur block. After the retirement he was living an insipid life in the village. During our project we came to know of him and thought of seeking his services in the project activities to which he readily consented to participate.

To our surprise he became extraordinarily active. He started interacting with children at the centre, shared his teaching experiences and gave quality teaching inputs to our educators, participated in all community

Meeting, motivated community towards education of children, supported children in program preparations, and actively participated in National Day programs.

On the basis of his loving and caring approach and his active participation he became a guardian figure both in community and for us as well. In no time he became cynosure of all eyes. He is so impressive as an educational leader that mere presence of his brings energy and inspiration. He has become livewire of the project activities and positive social change maker in the village.

From a dull dreary retired life to an active education leader his journey is remarkable and worth emulating of other stakeholder of community.

Bebi Biwi ... A community change maker through Functional Education for Adult women



Bebi Biwi, 39 year old, illiterate, poor housewife from Rahaspur village of Pakur block is great example of courage and conviction to fight one's way to achieve glory. While the daughter of this poor mother was studying at the Learning center, an educational intervention meant for drop out and unenrolled children, she started interacting with educators at the center and showed her keenness towards education. She herself wanted to learn. Her desire to learn got the leash when the project of functional literacy for adult women from rural community was introduced in the village. She immediately joined the adult learning center amidst all sorts of eyebrows

raised against her both by the family and community. She was discouraged no end and she struggled a lot doing her household duties but didn't quit. She continued learning braving all opposition and trying conditions. She even had to face some religious issues as the gatekeepers of Muslim community didn't like her free flowing ways. But she was determined to achieve what she wanted to. She did well and became functionally literate. She joined self help group (SHG) for livelihood skill development program. She learnt the technicalities of SHG quite efficiently and managed meetings, deposits, inter-loaning, account-keeping and all those related basics. She can read and write Hindi quite satisfactorily, can solve related arithmetical issues of SHG's money matters. Under Jharkhand state livelihood promotion scheme she was chosen one of the

most active members. She is leading her SHG effectively. Her SHG has been chosen by the government to undertake toilet construction program which she and her team has been doing proficiently. She has also started a dairy farm. She is presently earning more than ten thousand rupee per month. The condition of her family has improved in a big way. She is today a woman leader in her community and command great respect.

From a poor, illiterate, unassuming housewife to what she is today is a remarkable story of change which is awe-inspiring and exemplary!

Ajmira Khatun An inspiration to physically challenged community girls



Ajmira khatun, a girl child from Chandnagar of Pakur block, presently studying at Girl child Learning Center is an impressive case to fight the odds and handicaps look ahead. She is a special girl who became blind in one eye because of some disease when she was only two years old. Her family languishing under the curse of poverty could not afford proper treatment that resulted in her losing vision in one eye completely. She was growing and becoming conscious of her problem that she is not like other children. The problem had a negative effect in her emotional and moral development as a normal child. She stopped playing with other children and was reluctant in going to school as she thought she would be laughed at by other children. To bring her out of this complex was challenging. Special initiatives were taken to provide the girl a condition that she could feel normal. Children of the center were talked to and made to support her as friends, community people, parents and project team worked together to help her come out of her loneliness. She was admitted to GCLC where gradually she became normal and felt happy as the environment in the center was very supportive to her. She started taking her studies very sincerely and has been doing well as a student. She aspires to become a teacher.

This case is a good example that any child with any such issues who develop negative complexes must be encouraged and supported in the best possible manner so that he/she start feeling normal and progress normally. Creating a condition for them where they don't lose their dignity and self respect, making normal children understand and feel the pain so that they move along with them in a friendly manner is very important!

Financials-Audit Reports 2017-18

B. Gupta & Co.
Chartered Accountants

Patna Kolkata Ranchi

INDEPENDENT AUDITOR'S REPORT

TO THE MEMBERS OF
FOUNDATION FOR AWARENESS, COUNSELLING
& EDUCATION (FACE)

Report on the Financial Statements

We have audited the attached Balance Sheet of FOUNDATION FOR AWARENESS, COUNSELLING & EDUCATION (FACE), At:- Pakur, Distt:- Pakur (Jharkhand) as at 31st March, 2018 and the Income & Expenditure Account for the year ended on that date, and a summary of Significant Accounting Policies and other explanatory information.

Management's Responsibility for the Financial Statements

Management is responsible for the preparation of these financial statements that give a true and fair view of the financial position and financial performance in accordance with the Accounting Standards issued by the Institute of Chartered Accountants of India. This responsibility includes the design, implementation and maintenance of internal control relevant to the preparation and presentation of the financial statements that give a true and fair view and are free from material misstatement, whether due to fraud or error.

Auditor's Responsibility

Our responsibility is to express an opinion on these financial statements based on our audit. We conducted our audit in accordance with the Standards on Auditing issued by the Institute of Chartered Accountants of India. Those Standards require that we comply with ethical requirements and plan and perform the audit to obtain reasonable assurance about whether the financial statements are free from material misstatement.

An audit involves performing procedures to obtain audit evidence about the amounts and disclosures in the financial statements. The procedures selected depend on the auditor's judgment, including the assessment of the risks of material misstatement of the financial statements, whether due to fraud or error. In making those risk assessments, the auditor considers internal control relevant to the Society preparation and fair presentation of the financial statements in order to design audit procedures that are appropriate in the circumstances. An audit also includes evaluating the appropriateness of accounting policies used and the reasonableness of the accounting estimates made by management, as well as evaluating the overall presentation of the financial statements.

B. Gupta & Co.

Chartered Accountants

Continuation Sheet: 1

We believe that the audit evidence we have obtained is sufficient and appropriate to provide a basis for our audit opinion.

Opinion

In our opinion and to the best of our information and according to the explanation given to us, the financial statements read with notes thereon give a true & fair view in conformity with the accounting Principles generally accepted in India-

- a) *In the case of the Balance Sheet, of the state of affairs of Foundation for Awareness, Counselling and Education as at 31st March, 2018;*
- b) *In case of Income & Expenditure Account of excess of Expenditure Over Income for the year ended on that date.*

Report on other Matters:

- (i) We have obtained all the information and explanation which to best of our knowledge and believes were necessary for the purpose of our audit.
- (ii) In our opinion proper books of account have been kept by the Society so far as appears from our examination of books of accounts.
- (iii) The Balance Sheet and Income & Expenditure Account dealt with by this report are in agreement with the books of accounts.

For B. GUPTA & CO.
Chartered Accountants
[FRN 000933C]

PATNA,
DATED:

31 AUG 2018

(S. PRASAD)
Partner

FOUNDATION FOR AWARENESS, COUNSELLING AND EDUCATION (FACE)

AT + PO: PAKUR, RAJPARA – DISTT – PAKUR (JHARKHAND)

ACCOUNTING POLICIES AND NOTES: For the Year Ended 31st March, 2018.

1. The Society has received piece of land as gift as detailed below:
 - (a) 2002-2003, 10 Kathas in Mouza – Champa Danga no.129, P.S.-Pakur, District – Pakur.
 - (b) 2005-2006, 8 Kathas 5 dhur, Plot No.274 in Mouza – Champa Danga No. 129, P.S. – Pakur, District – Pakur.
2. No depreciation has been charged on the fixed assets.
3. The fixed assets is shown at cost value.
4. The Income and Expenses are accounted for on cash basis.
5. The organization has followed financial manual for the purpose of financial management & expenditure.



Sharique Khan

President

President
FACE

Randy

Secretary

Secretary
FACE

Asmita

Treasurer

Treasurer
FACE

FOUNDATION FOR AWARENESS, COUNSELLING AND EDUCATION (FACE)

AT + PO: PAKUR, RAJPARA, DISTT. PAKUR (JHARKHAND)

CONSOLIDATED BALANCE SHEET AS AT 31ST MARCH, 2018

	Amount Rs.	Amount Rs.
Capital and Liabilities:		
Capital Fund:		
IIIMPACT- Pakur	22,500.00	
FACE - MAIN	242,711.00	265,211.00
General Fund:		
FACE: As per last Account	486,307.23	
Less: Excess of Expenditure Over Income Transferred from Income Expenditure Account	38,523.13	447,784.10
Unspent Fund:		
IIIMPACT - Pakur	447,826.34	
FACE - Kolkata	34,805.64	482,631.98
Payable to TET		12,779.78
TOTAL:		1,208,406.86
ASSETS:		
Fixed Assets:		
IIIMPACT - Pakur	22,500.00	
FACE - (MAIN)	687,296.00	709,796.00
Loan & Advances:		
Tax deducted at source (FACE)		12,104.71
Cash and Bank Balances:		
Cash-in-hand:		
IIIMPACT - Pakur	246.00	
FACE - MAIN	126.00	372.00
Balance in Saving Bank Account with:		
Punjab National Bank:		
IIIMPACT Pakur	425,532.68	
FACE: (a) Main	10,320.68	
(b) TSWT	2,278.60	438,131.96
State Bank of India:		
FACE: Main	8,542.29	
FACE: FCRA	2,080.66	10,622.95
Union Bank of India:		
FACE (Main)		1,934.00
Syndicate Bank:		
FACE Main		639.60
State Bank of Bikaner and Jaipur:		
FACE Kolkata		34,805.64
TOTAL:		1,208,406.86

In Terms of our report of even date

For B. Gupta & Co.
Chartered Accountants

(FRN:000933C)

Patna,

Dated: 31 AUG 2018

(S. PRASAD)

Partner

(M.No.080958)

President

Secretary

Treasurer

President
FACE

Secretary
FACE

TREASURER

FOUNDATION FOR AWARENESS, COUNSELLING AND EDUCATION (FACE)
AT + PO : PAKUR, RAIPARA, DIST: PAKUR (JHARKHAND)
CONSOLIDATED INCOME AND EXPENDITURE ACCOUNT FOR THE YEAR ENDED 31ST
MARCH 2018

	Amount Rs.	Amount Rs.
INCOME:		
Unspent Balance on 01.04.2017:		
IIMPACT - (Pakur)	101,893.65	
FACE - Kolkata	33,555.64	135,449.29
Grant Received during the year:		
IIMPACT (Pakur):		
Grant		5,284,900.00
Interest on Saving Bank Accounts:		
IIMPACT - Pakur:		
Punjab National Bank	13,790.00	
FACE- Kolkata:		
State Bank of Bikaner & Jaipur	1,250.00	
FACE- (Main):	2,151.53	17,191.53
Income under FACE:		
Miscellaneous Receipts	2,000.00	
Membership Fees	4,800.00	
Scrap Sale	600.00	7,400.00
Excess of Expenditure Over Income		
FACE - Main, Transferred to Balance sheet		38,523.13
TOTAL:		5,483,463.95
EXPENDITURE:		
Exp. Under IIMPACT - Pakur:		
T.L.M	494,826.00	
Training/Workshop	359,762.00	
Project office Management & Monitoring Cost	399,681.00	
Salary	3,688,300.00	
Bank Charges	188.31	
Audit Fee	10,000.00	4,952,757.31
Exp. Under FACE - MAIN:		
Audit Fee	24,000.00	
Office Expenses	7,087.00	
Postage and Courier	70.00	
Travel Expenses	8,340.00	
Website Renewal Charges	7,670.00	
Bank Charges	907.66	48,074.66
Unspent Balance as on 31.03.2018:		
IIMPACT - Pakur	447,826.34	
FACE - Kolkata	34,805.64	482,631.98
TOTAL: Rs.		5,483,463.95

In Terms of our report of even date

For B. Gupta & Co.
Chartered Accountants
(FRN 000933C)

Patna,
Dated: 31 AUG 2018

(S. PRASAD)
Partner

President
FACE

Secretary
FACE

Treasurer
TREASURER

31 AUG 2018

B. Gupta & Co.
Chartered Accountants
(FRN 000933C)

FOUNDATION FOR AWARENESS, COUNSELLING AND EDUCATION (FACE)
AT + PO : PAKUR, RAJPARA, DIST: PAKUR (JHARKHAND)
CONSOLIDATED RECEIPTS & PAYMENTS ACCOUNT FOR THE YEAR ENDED 31ST
MARCH, 2018

	Amount Rs.	Amount Rs.
RECEIPTS:		
<u>Opening Balance at Bank:</u>		
<u>IIMPACT - PAKUR:</u>		
Punjab National Bank	79,640.99	
<u>FACE (Kolkata)</u>		
State Bank of Bikaner and Jaipur	33,555.64	
<u>FACE: MAIN</u>		
Punjab National Bank (FACE)	51,134.99	
State Bank of India (FCRA)	2,006.66	
State Bank of India (Main)	8,039.29	
Punjab National Bank (TSWT)	2,954.95	
Union Bank of India	2,047.00	179,379.52
<u>Opening Cash in hand:</u>		
IIMPACT (Pakur)	19.00	
FACE (Main)	773.00	792.00
Transferred from (TET)		12,779.78
<u>Grant Receipts During the year:</u>		
IIMPACT - Pakur:		5,284,900.00
<u>Interest on Saving Bank Account:</u>		
IIMPACT Pakur:		
Punjab National Bank	13,790.00	
<u>FACE (Kolkata):</u>		
State Bank of Bikaner and Jaipur	1,250.00	
<u>FACE (Main):</u>		
	2,151.53	17,191.53
<u>OTHERS: FACE, Main</u>		
Miscellaneous Receipts	2,000.00	
Membership	4,800.00	
Scrap Sale	600.00	7,400.00
TOTAL:		5,502,442.83
PAYMENT:		
<u>Payment Under IIMPACT Pakur:</u>		
TLM	494,826.00	
Training / Workshop	359,762.00	
Project Office Management & Monitoring Cost	399,681.00	
Salary	3,688,300.00	
Bank Charges	188.31	
Audit Fee	10,000.00	4,952,757.31
C/F		4,952,757.31



B/F		
Payment Under FACE - Kolkata:		4,952,757.31
Bank Charges		
Payment Under FACE - Main:		
Audit Fee		
Office Expenses	24,000.00	
Postage & Courier	7,087.00	
Travel Expenses	70.00	
Website Renewal Charges	8,340.00	
Chair (Furniture)	7,670.00	
Bank Charges	3,000.00	
	907.66	51,074.66
IIMPACT (Inter Unit Transferred)		
TDS (TET)		12,104.71
Closing Balance at Bank:		
IIMPACT - Pakur:		
Punjab National Bank		425,532.68
FACE - Kolkata:		
State Bank of Bikaner & Jaipur		34,805.64
FACE - MAIN:		
Punjab National Bank A/c No. 6119000100017071	10,320.68	
Punjab National Bank A/c No. 6119000100008950	2,278.60	
State Bank of India A/c No. 11444935835	2,080.66	
State Bank of India A/c No. 11440440358	8,542.29	
Union Bank of India A/c No. 621302010002477	1,934.00	
Syndicate Bank	639.80	25,795.83
Cash in hand:		
IIMPACT - (Pakur)	246.00	
FACE - MAIN	126.00	372.00
TOTAL:		5,502,442.83

In Terms of our report of even date

For B. Gupta & Co.
Chartered Accountants
(FRN:000933C)

PATNA,

DATED: 31 AUG 2018



(S. PRASAD)
Partner
(M. No. 080958)

Sharigekha Prasad
Resident Secretary Treasurer

President Secretary
FACE FACE

TREASURER

GET INVOLVED

As a Citizen

If you ever care for condition of children and community in extreme difficult conditions who are one of the most deprived sections of our society as they suffer from extreme forms of exclusion and destitution. As citizens, we can do a number of things together to alleviate their sufferings such as developing awareness about their life and sharing the same with others. We can even connect these people in need with the NGOs and govt.-managed institutions working for their welfare. If interested citizens want to do something worthy and become part of a systematized effort, they are most welcome to join hands with FACE.

As an NGO or Individual

FACE is always open for collaboration with people and organizations working for excluded children and community in difficult circumstances. We heartily extend our resources, materials, publications, and whatever we have for the benefit of others in their effort for community welfare.

As a Professional Social Worker

If you are looking for an opportunity to work with children, excluded women and deprived community in need of care, empowerment and protection, then FACE can be a place of your choice.

Transparency & Disclosure 2017-2018:

Sl. No.	Name	Designation	Gross Remuneration under project based work
1	Mr. Sharique Hayat Khan	President	Zero
2	Mr. Vidyasagar Choudhary	Vise- President	Zero
3	Mrs. Ritu Pandey	Secretary	97500.00
4	Mr. Deborata sinha	Treasurer	Zero
5	Mr. Ratan singh	Member	Zero
6	Mr. Birendra Pathak	Member	Zero
7	Mr. Chanchal Jha	Member	Zero
8	Mr. Rosa Soren	Member	Zero
9	Mrs. Atryee Chandra	Member	Zero

Accountability & Transparency:

No travel and other reimbursements have been made to any board member during the board meeting.

Highest paid salary and lowest paid salary under project base budget by the directive of the funding organization.

Highest paid Rs. = 18,000 /- Per month

Lowest paid Rs. = 3750 /- Per month

Staff Details: (as at march 31, 2018)

Gender	Paid Project based full time	Paid Project based Part time	Paid casual time	Unpaid Volunteers
Male	09	00	01	1000
Female	54	00	00	1000
Total	63	00	01	2000

Distribution of staff according to salary levels (as March 31, 2018)

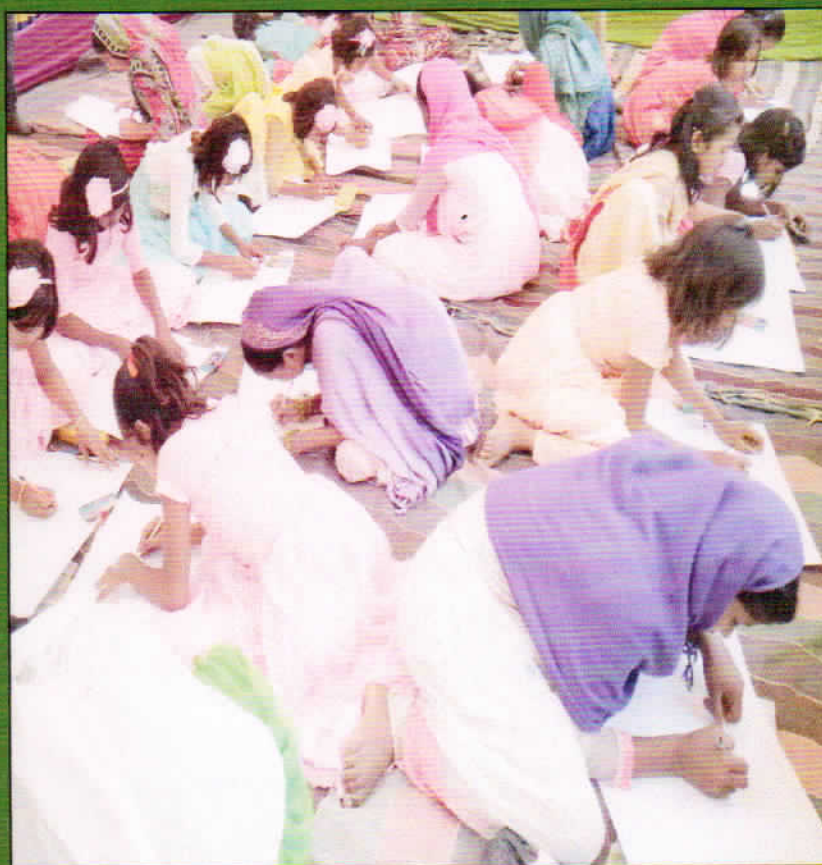
Slab of Gross salary (in Rs.) Plus benefit paid staff	Male	Female	Total
<2000	00	00	00
2001-5000	01	59	60
5001-10000	07	00	07
10001-20000	01	00	01
20001-30000	00	00	00
30000>	00	00	00

Total Cost of Travel by all staff during the year: 1, 59,741.00/-

Total Cost of International Travel by all staff during the year: NIL

*I know the path
It is straight and narrow
It is like the edge of a sword
I rejoice to walk on it
I weep when I slip
God's word is:
He who strives never perishes*

M.K. Gandhi



Foundation for Awareness Counselling & Education

FACE

Rajapara, Pakur

Pin- 816107

Jharkhand

Website- <http://www.faceindia.net>

E-mail- face197@rediffmail.com