

FACE



Foundation for Awareness, Counselling & Education-FACE



Annual Report 2013-2014

Annual Report 2013-2014

Page No.

I. Content

1) About FACE	1
2) From the Desk of the President	2
3) From the Desk of the Secretary	3
4) Organizational Structure	4
a) Organizations Details	4
b) Legal Status	5
c) Governing Board of FACE	6
c) Monitoring and Evaluation Process of the Organization	7
5) Visual Glimpses of various activities in FACE	8-11

II. Education

a) Elementary Education (EE)	12-13
b) Girl Children Learning Centers (GCLC)	14
c) Functional Literacy for Women and Empowerment (FLWE)	15

III. SHG promotion & Livelihood

a) Financial Literacy for Excluded Women (F1)	16
b) SHG Promotion and Bank Linkage	17

IV. Child Line

V. Workshops & Seminars

- a) Women Reproductive & Sexual health
- b) Learning Games for Girls (LGG)
- c) Training of Trainers of Girl Child Education Project
- d) Work shop on New born Care Campaign

VI. Achievements of FACE

a) Case Studies	20-35
b) Graphical Presentation	36-37

VII. Acknowledgments

VIII. Transparency Disclosure

IX. Media Coverage

X. Financial details

About FACE

FACE is a pneumatic for Foundation for Awareness Counselling and Education. FACE was established as a non-profit and Non Government Organization on 14th January 2002 and registered under the Societies Registration Act, 1860 and currently rendering service in Pakur district of Jharkhand and Sandeshkhali area of South 24-Parganas district of West Bengal.

FACE came in the existence during acute mass illiteracy, deplorable condition of women and children and poverty. FACE has set about its task in the remotest corner of the state of Jharkhand, India. This was the beginning of the long journey of FACE. The basic tasks of FACE are eradication of illiteracy and upliftment of socially excluded community.

The FACE is headquartered in the District town of Pakur at the North Eastern strip of Jharkhand. Pakur is still inhabited by schedule castes and tribes and minorities living life in complete woe. The socio- economic development is clouded by a haze of illiteracy, superstitions, myths and poor condition of socially backward community.

During the last twelve years we have been associated with various Government and Non government agencies through various programmes. Our current Projects are a) Continuation of elementary education for drop out and never enrolled children. b) Functional Literacy for adult women c) Girl children education centre. c) Sexual and Reproductive health awareness of adolescents and women. d) Livelihood Promotion.

OUR VISION:

Our *VISION* is 'An Empowered and Enlightened Society through Education and Holistic Development.'

OUR MISSION:

Our *MISSION* is to create self reliant , equitable, value based and educated society by means of social transformation through empowerment of rural women, minorities, schedule caste and schedule tribe and economically and socially backward part of the population.

From the Desk of the President

It gives me immense pleasure in placing before you the activities that were taken up and executed by FACE during 2013-2014. The journey which we started during the year 2012-2013 saw milestones being created by the team of FACE. Needless to say it gives us, the Governing Body of FACE a great sense of satisfaction. A strong bond has always been there with our funding organizations, officials in administration, health, welfare and education and our own team members without which all these success stories would not have been possible.



This year several initiatives like; Continuation and Expansion of Elementary Education (CEEE), Girl Child Learning Centres (GCLC) and Functional Literacy for Women which were taken up last year are being continued.

The learning from the earlier projects has helped us to strengthen our capabilities towards our existing projects. We also thank the Government and other resource non- government organisations for keeping our spirits high during times of trial and tribulations.

I take this opportunity to thank all the agencies who have provided the support during the 2013-2014 like; Tata Social Welfare Trust, Tata Education Trust, IIMPACT, Ministry of women and child development, NABARD- Kolkata and Ranchi, Jharkhand State Livelihood Promotion Society Pratham (ASER) Jharkhand and District Administration and Judiciary department of Pakur. Last but not the least I would like to mention the praiseworthy role played by the team of FACE.

Sharique Hayat Khan

(President)

From The Desk of the Secretary

Today I have come here to place the Annual Report for the year 2013-2014. I can feel my heart throbbing with elation as FACE has crossed one decade of its meaningful existence. As I look behind the years we have left behind, I can see the grit, determination with which FACE has faced the trysts with the various educational interventions to the marginalized communities, health awareness for women, functional education for women, elementary education for excluded children.



I believe that the duration of our existence does not matter as much as the quality and usefulness of our existence. I can say with conviction that we are able to prove ourselves although we have been in this field for a period of 11 years. I believe our success can be attributed to simple team work. I also believe in working as a team with seamless coordination. Here in FACE I promoted the practice of building partnership with community and acting on suggestions of experts and consultants. This has helped us to boost empowerment among women, child tracking and retention of students in schools and awareness about basic health and hygiene including reproductive health practices. Better understanding has made work more challenging for our staffs who now feel it is not merely a job but a challenge to ensure social transformation. Most importantly the work friendly environment of face has given enough scope for transfer of knowledge both perpendicularly and across.

Our educational initiatives like admitting children studying in Makhtabs and Madarsas into formal schools and mapping schools dropouts have given us encouraging results. We cannot think of social change without a change in the lives of the downtrodden women in our society. We have provided quite a few avenues for these excluded women.

I would like to share our success with and extend thanks to our team, the Governing Body, and funding agencies like Tata Social Welfare Trust, Tata Education Trust, IIMPACT, Ministry of women and child development, NABARD- Kolkata and Ranchi, Jharkhand State Livelihood Promotion Society Pratham (ASER) Jharkhand and District Administration and Judiciary department of Pakur for their support, encouragement and faith which has given us the impetus and encouragement to move us in the innovative path of social transformation.

I invite you to refurbish our pledge to move forward towards our final victory of building a vibrant and empowered society.

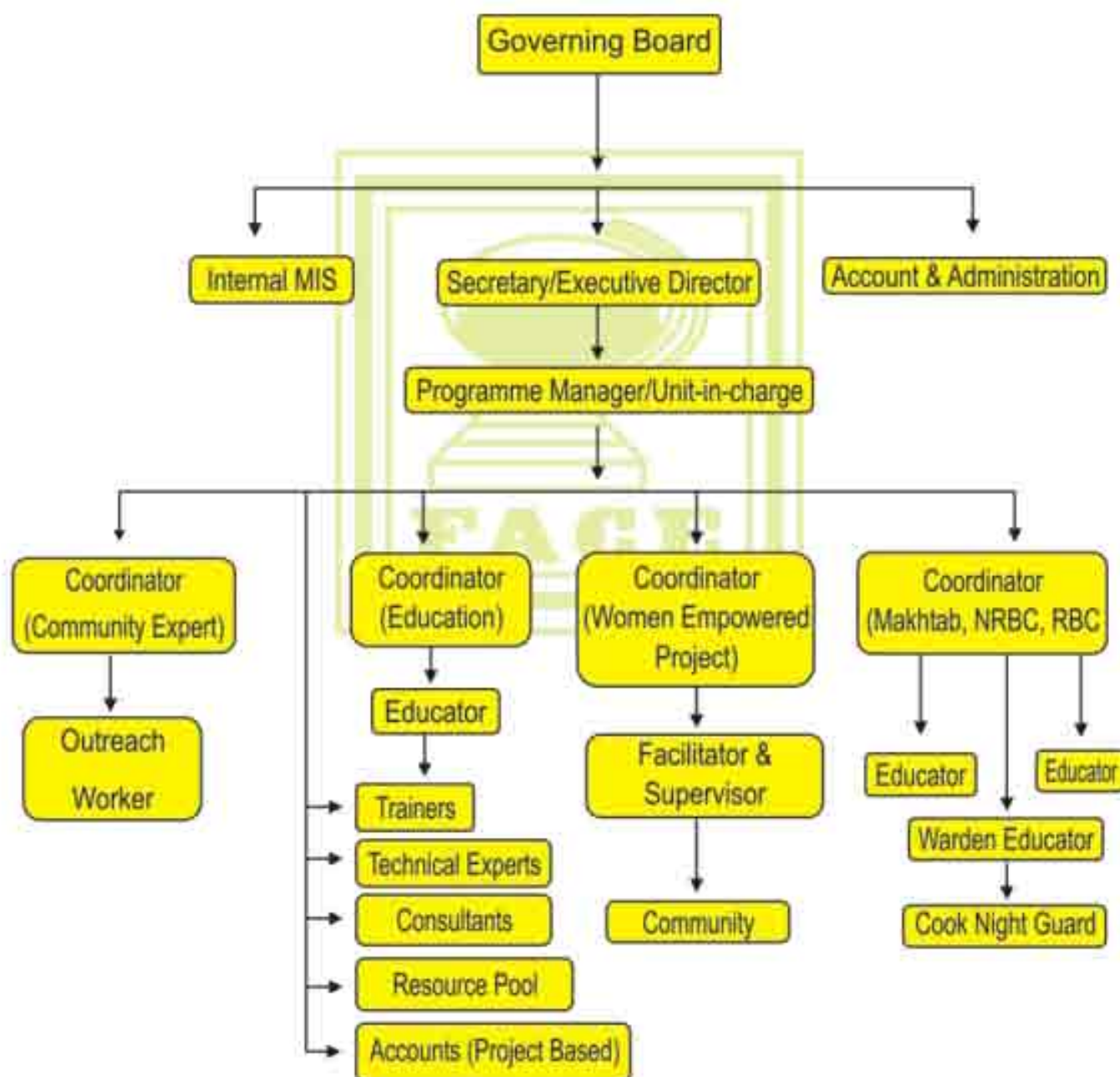
Ritu Pandey

(Secretary)

Organizational Structure

(a) Organizations Details

Face has a governing board consisting of nine members who are responsible to run the organization under the active leadership of the President and the Secretary. The following table shows the hierarchical structure of the organization.



(b) Legal Status

Registration-

Registration Act, 1860 Regd. No. 192 dated on 14 January 2002.

☞ u/s 12A of Income Tax Act, 1961

☞ FACE is registered under section 4 (1) (b) of foreign contribution & regulation act, 1976 (FCRA registration no: 337780015)

☞ PAN No : AAAAF0410E

☞ TAN No : RCHF00102E

☞ 80 G : SSAA/ Dhanbad/Tech/80G-7/2013-4/589-92

Registered/Head Office:

FACE

Rajapara,

Pakur-816107

Jharkhand

India

Phone : 094311-65148, 09798237137

E-mail: face197@rediffmail.com

ritupanday16@gmail.com

Website: www.faceindia.net

Unit Office:

FACE

BG-114, Rabindra Pally

Kestopur,

Kolkata 700101

West Bengal (INDIA)

Our Bankers

☞ State Bank of India, Pakur

☞ Syndicate Bank, Pakur

☞ Punjab National Bank, pakur

☞ Union Bank, Pakur

☞ State Bank of Bikaner & Jaipur, Saltlake

Auditors

Chowdhury Basu & Ray

Mr. Saibal Ghosh, Partner

Governing Board of FACE

NAME	DESIGNATION	ADDRESS	OCCUPATION
Mr. Sharique Hayat Khan	PRESIDENT	Thanapara, Pakur	Social Worker / Educationist
Mr. Vidyasagar Choudhury	VICE-PRESIDENT	Thanapara, Pakur	Social Worker
Ms. Ritu Pandey	SECRETARY	Rajapara, Pakur	Social Worker, Psychologist
Mr. Debobrata Sinha	TREASURER	Thanapara, Pakur	Social Worker
Mr. Ratan Singh	MEMBER	Bank Colony, Pakur	Social Worker
Mr. Birendra Pathak	MEMBER	Tinbangla, Pakur	Social Worker
Mr. Chanchal Jha	MEMBER	High School Road, Pakur	Social Worker
Ms. Rosa Soren	MEMBER	Gokulpur, Pakur	Social Worker
Ms. Atreyee Chandra	MEMBER	Garia, Kolkata	Clinical Psychologist

MONITORING AND EVALUATION PROCESS OF THE ORGANIZATION

The work culture of FACE is rigorous and there is stringent monitoring of field work. This is a very important and valuable working system of the organization. This not only brings into light any discrepancy but also creates a sense of responsibility and accountability among the team.

The monitoring system is led by the Secretary/ Project Manager. Each project has field level coordinators and cluster wise instructors who do the monitoring as well their work plan. The project team has been trained well to make them well versed in their activities. Project related documentation has been systematically maintained both at centers and head office. The organization's resource pool, consultants and pedagogy experts form the core of internal monitoring system. Monthly meeting which has been conducted in each project is taken to assess the progress.

The Account officer is in charge of the Account section. There is a organized system of accounting in the office to record proper cash inflow and outflow. Educators are involved in educational management of the centers. Facilitators can directly intervene in the community activities. Documentary management of the organization has well defined system of reporting and recording each area of activity. Different Capacity building sessions/training has been conducted by the master trainers. Registers are kept by field coordinators and monitored by the external resource pool. Quarterly documents are finally scrutinized by the Secretary / Project Managers with Project-in-Charge, Supervisors and Coordinators.

Capacity Building

FACE has imparted various type of capacity building training for grass root workers, formal school teachers, Aaganwari sevikas, school management committee, Moulana and mudarries of Maktab. The objective of the training is to strengthen village youths (male & female) for their teaching ability and develop their self confidence. We are creating an environment for learning cum growing. Capacity building session is very useful for all level of staff and other sectors. Master trainers and Resource pool members after mapping the ability of the staff give Gap Analysis Training.



Visual Glimpses of various activities in FACE



Community meeting at Elami village



Girl child learning centres



Group photograph of girls in chanchki
GCLC



Parents meeting in Jhikarhati Panchayat

Visual Glimpses of various activities in FACE



Computer learning centre for girls



Governing Board Meeting of FACE



Visit to historical place at Pakur
'Martila Tower'



Need assessment of Maktab children

Visual Glimpses of various activities in FACE



Class room activity of learning centers



Peer to peer activity at the center



Organized community health camps at
Nowada village



Community meeting for project
sustainability

Visual Glimpses of various activities in FACE



Account opening for excluded women



Capacity Building Session of educators



Evaluation of women literacy centre at Sangrampur



Functional literacy classes in progress

Elementary Education (EE)

Education when imparted at the early childhood has far reaching impact on the future of children. One can recall a saying from The New Testament " **Train up a child in the way he should and when he is old , he shall not depart from it.**" Education teaches not only what is in the books but moulds the child as a whole----their thoughts and concepts.

When we started the first phase of Elementary Education we realized that sending a child to school did not solve the problem of ignorance and illiteracy. Most of the children coming from the rural block of Pakur were first generation learners who spoke only Bengali or could understand only what was taught in the Madrsas. These children could not understand what their teachers were speaking or teaching, let alone what was written in the books. The six year olds were getting alienated from the mainstream. The teachers too were not equipped to tackle the situation.

It was at this point FACE has evolved and tried to address the existing problem. We came out with the first solution- **the Cluster Learning Centres (CLC)**. The CLCs were meant to provide Support to the children who were lagging behind and bring them to the desired level.

In the residential camps the drawbacks of the children could be identified and rectified. Each CLC was meant to make the children school worthy. Children between 4-6 years was be prepared for school with the CLCs in cooperation with the Anganwadi workers. The attention would be on language transition, locomotor skill development, pre mathematical concept and creative activities.

The EE has developed a remedial package for mainstreamed children to support retention in school. Children between the age of 8-14 years was constantly tracked and mapped to gauge their status. A library and reading room has been started in 12 panchayat level schools. These are means to develop children reading and writing ability. Continuous and comprehensive evaluation system has been employed to monitor the learning levels of children.

Religious taaleems which are imparted in Maqtabas and Madarsas have been introduced to increase the educational impact and reach of formal education.

The project covers numerous activities for the benefit of the children. The details activities in the project are as follows-

- i. **Cluster Learning Centers (CLC)**-Cluster Learning Centers are the platform for educational activities in community which provides Library facilities where children of the community comes for reading varieties of story books and also performs or practices extracurricular activities.

- ii. **School preparedness programme** - The programme provides education to the early childhood students through different types of games and puzzles and evaluates them monthly.
- iii. **Work with schools** - Accelerated method of teaching is being provided to the children. Bi-monthly tests are conducted for evaluating and tracking the students. Support is provided to the Volunteers by the Master Trainers. Regular Parents meetings are conducted.
- iv. **Work with Maqtab-Madarsas**- Teachers of Maktab/Madarsas are being provided training in modern education. The FACE Master Trainers trained these teachers and introduces them to Hindi, English and Mathematics.



GIRL CHILD LEARNING CENTRES (GLCC)

In spite of the fact that the Indian Constitution guarantees that education is a basic human right and that the girls have equal right to attend school from the age of six till elementary graduation. The girl children in most families in India is discriminated against and denied this right due to preference to male inheritance, early marriage, dowry, violence against women etc.

Further reason for inequality during primary education is that girl's cannot attend schools due to inadequate facilities in primary schools. Schools are unable to provide safe and sanitary facilities for young girls. To add to the woes the basic infrastructural facilities like proper roads, running water are often scarce.

In the light of the prevailing conditions the effort of IIMPACT (the agency that supported the project) towards girl children education centre in rural sector is praiseworthy. Under their support we are running Forty girl children learning Centers in Pakuria and Pakur blocks in Pakur district. The centers are running effectively with 1200 girls all-total with 30 girls in each centre. Almost all the girls have keen interest in getting education. The girls have undergone changes both behaviorally and academically. Their parents and community are showing happiness on what they have achieved so far. All the teachers have gone through phase wise training sessions and are showing good learning as teachers, preparing and using TLM. TLMs have been developed from the curriculum of their class. Independence Day and other national and memorable days were celebrated by the children in all the centers. Eminent person of the villages were invited during the class hours and in the programmes conducted.

The children were given exposure visit to local areas like railways stations, banks and village hats. In each Centres extracurricular activities are organized which mostly consists of dance, songs and outdoor games and storytelling sessions.



FUNCTIONAL LITERACY INTERVENTION FOR WOMEN

This Project consists a series of educational and empowerment activities for women between the age group of 18 to 45 years. It includes basic & advance education, exposure visits, development of relevant curriculum in local language, peer group learning, improving life skills, and leadership development and information dissemination.

A baseline survey is conducted at the beginning of the project that gives us an insight related to health and socio-economic profile of the women. This assessment has been done in a participatory way.

The Project has two phases that is basic literacy and advance literacy for women learner. The several capacity building/ training have been impacted by Nirantar, New Delhi, which trained the master trainers and undertake staff capacity building. The trainings also monitor and serve as indicators of development.

The learning centres have recognition in the rural area. The methodology has been adopted for the literacy program is suitable for the adult women learners. Each centre has 25 -30 learners and function for four hours a day. The Community provides the location of the centre. The Project has established temporary infrastructure, learning materials books and stationary. Nirantar as consultant organization has been provided technical support for the development of curriculum and teaching materials. The centres have modest collection of books and reading material to familiarize the women with the world of letters and various information and government schemes.

The literacy program has given meaningful life to the women. now women learners could aspire in their life after getting the education. Now neo literate women could make their dream to be matriculate through open education.

Various committees has been formed for their empowerment they are starting to change their mindset & started to be interacted in various department and financial institution.



FINANCIAL LITERACY FOR EXCLUDED COMMUNITY (FI)

Financial Literacy for Excluded Community (FI) project was undertaken to save the poor villagers from the financial hardships faced in their day to day life due to their need to borrow money from private moneylenders. On one hand financial literacy is supposed to be educating the people regarding the sort of help they can expect from the financial institutions. On the other hand we have the financial institutions catering the needs of the borrowers. Thus the pillars of financial literacy provide linkage with the common rural population to the banks and FIs.

Financial inclusion provides financial products to the socially excluded people living in villages. These include remittance, entrepreneurial credit, insurance and pension etc.

Today the Self Help Groups (SHGs) and Micro finance Institutions(MFIs) are able to take the desired banking knowledge to the rural masses .

The target group are able to manage their money and develop a saving habit for their future and difficult times. The women folk are trying to change their habit of saving their money in nonbanking sectors and depositing their earnings in banks. This is preventing in forfeiting their own savings. The husbands of most of these women working as migrant workers are now sending money to their family through remittance system.



SHG Promotion and Bank Linkage

This program is meant to help the poverty stricken women whom do not get a helping hand from any quarter then the financial institution emerged as a benefactor to provide financial aid to this excluded women. The ventures started with support from Jharkhand State Livelihood Promotion Society and NABARD.

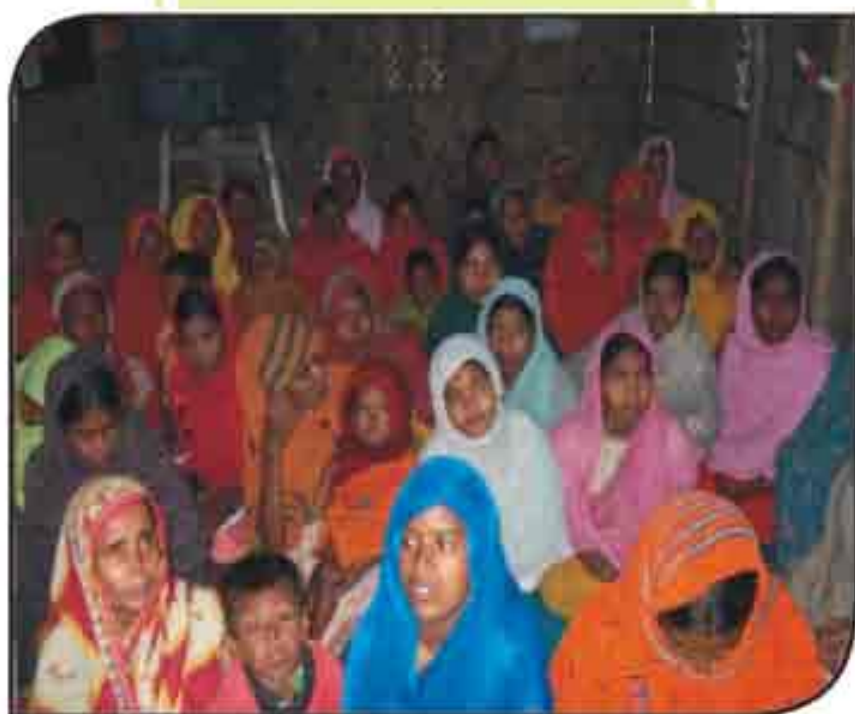
SHG linkages with Financial institution under support from NABARD

Fifty SHGs of rural women of the community in different villages in Pakur block have been formed with the active participation of six hundred women. These SHGs have been linked with the branches of nationalized banks for providing them with project based loans. The rating process for sanctioning of the loans is in the pipeline.

SHG formation & linkage of excluded community womenfolk with financial institution for multifaceted economical activities

The target for intervention were villages with large minority population where the literacy rate is very low and the main source of livelihood is daily wages from manual labour in brick kilns and Biri making. The villages have been divided into 36 SHGs which are further classified into 8 village organizations (VO). There are thirty six SHGs presently functioning and linked with the banks. All SHGs are functioning well at village level and gradually developing their skills and leadership qualities.

They have been given various capacity building and training programme to enhance their capacity to work independently. The institutions headed by women also need support to run smoothly and take benefits objectively. The banks should come forward and show empathy towards financial scaling up poverty stricken community and they need to associates themselves with grass root institutions.



CHILDLINE:

We have come across several cases of child abuse, child labour, missing child, child trafficking and sexual exploitation of girl child in this border area between Jharkhand & West Bengal as well as the international border with Bangladesh. We felt the need to extend the services of CHILDLINE which is National 24 hours free emergency helpline & outreach services for children in distress who are in need for care & protection. For this we under support from Ministry of women & child development Govt. of India & CHILDLINE India foundation have opened one child line sub-centre at Pakuria under the Pakur district & started the CHILDLINE services with the help of volunteers & FACE staff.

In our outreach programme we have reached out to the most marginalized children & provided intervention by awareness meeting at community level, in-house session in formal school, health check up camp & Child Dosti Week in remote & interior areas, Medical support for children & most importantly emergency rescue operation for children in distress followed by special counselling, emotional support & guidance.

- Heightened awareness about right issue & protection of children from abuse.
- Sensitization of ground level local administration law & order machinery about protection of children & prevention of child trafficking.
- Children got medical & emotional support after their rescues from a distress situation by the Pakuria CHILDLINE sub-centre.



WORKSHOPS AND SEMINARS

Women Reproductive and Sexual Health

This programme was mainly meant for imparting the knowledge about sexual reproduction and health and also to stop deaths during pregnancy. This programme mainly touches the lives of women, girls and their family. Because it teaches them to handle the pregnant women. Due to lack of information the women and girls suffer from ill health which proves a burden for their family and the society. There is always a problem with the health of women right from their childhood, puberty and pregnancy till their menopause. These technical discussion were discussed and explained to the excluded women who are generally illiterate and underdeveloped. This programme was passed on to the women in very lucid manner. So that they could manage their health as and when needed. These programmes were meant to make the women aware of the contraceptives management of pregnancy and understanding the stage of menopause.

Learning games for girls (LGG)

This programme was meant to teach the teenagers by 'play and learn method' to be alert about their health. There were eight points which are taught to the teenager's concerning their health. After this, module is taught to the teenagers they become aware of the factors which an effect their health and reproductive system. These eight points are very common but important like; nutrition, diarrhoea and its treatment, washing their hand, knowing their body feature, prevention of HIV and AIDS.

Training of Trainers for Girl Child Education

FACE in collaboration with IIMPACT has organised Training of Trainers for girl child education for eastern region. IIMPACT team members have provided training on uniformity of girl child education among IIMPACT programmes imparted by various NGOs of eastern region. Participant NGOs have a common understanding through discussion on various topics like how to teach in play-way method in centres, way of assessment, monitoring etc. The community can be motivated and mobilized according to its needs was emphasized during training.

Workshop on New Born Campaign

National Rural health Mission in collaboration with UNICEF and CINI, Jharkhand declared 15 to 21 November as newborn care week. They have selected NGOs along with FACE attended a State level orientation programme. On 15 to 21 November a special Gram-Sabha was arranged for the community where the mukhiyas of each village play an important role to address the meeting. ANMs, Sahiyas, block level authorities were involved in the programme. The issues that were discussed (i) Risk period of neonatal death (ii) the reasons of death (iii) current scenario of their village iv) care of neonatal v) exclusive breast feeding vi) dressing of newborn vii) kangaroo mother care viii) Cleanliness ix) danger signals x) referrals xi) birth registration for different modes of delivery and xii) open discussion on prevention of neonatal death.

ACHIEVEMENT OF FACE

(A) CASE STUDY

Name - **Shoharab Shaikh**
S/o - Niyamuddin Shaikh
Village - Jaykistopur
Panchayat - Jaykistopur
Age - 14 years



His pictures in words

Shoharab Shaikh is a fourteen (14) year old boy who comes from a very poor family in Jaykistopur. His parents' works as daily labourers. His family consists of seven members. As a result of poverty and a large family, proper attention could not be given to him. He became an unmanageable and errant child without any education. He has been selected for the FACE Elementary education centre during April 2013. He has scored very low marks in the Need Assessment. Shoharab has been motivated to attend the learning centre and started improving within two months. In the Bimonthly test he scored good marks. He is soon discovered to be very good at drawing as during a Balmela he stood first. He even has been started teaching his own siblings. Elementary education project has changed the life of Shoharab Shaikh.

CASE STUDY

Name - **Gulzar Shaikh**
S/o - **Affan Shaikh**
Village - **Ishakpur**
Panchayat - **Ishakpur**
Age - **14 years**



His pictures in words

Gulzar Shaikh came from poor family of six brothers and one sister. He studied Primary School in Randanga till class V. After coming there for few days he left the school and started carrying coal and also worked in a brick kiln.

After a few months he was picked up along with thirty other children by FACE for their remedial learning centre. Gulzar started his studies. In the need assessment test it was found that he did not have any idea about English, Hindi and Maths. After going to the learning centre he started taking up his studies very well. In the bimonthly test he scored the highest marks in English, Hindi and Maths. Days pass by very fast and soon Gulzar passed class five and was promoted to class six in Ishakpur primary school. Gulzar came to the CLC regularly and started reading English books. He even expressed his ambition to become a doctor. In this way FACE gave Gulzar a new sense of direction.

CASE STUDY

Name - Jubeda Khatun
D/O- Mainul Shaikh
Village - Sahabajpur
Panchayat - Farsa
Age - 11 years



Her pictures in words

Jubeda Khatun comes from a family of eight siblings. They are very poor and their livelihood consists mainly of Biri making. Jubeda's family is not literate and do not care about the education of the children. But Jubeda was an exception as she comes to the elementary education centre conducted by FACE under the CEEE project. The first day when she comes to attend the class she cannot not read or write and not even able to write her name. But after one year at the Remedial centre that she can read and write letter for the family and even keep the records for the Biri making business. Today not only she is literate but she tries to teach her sister, nephew and nieces. FACE has encouraged her to become a teacher in the future.

CASE STUDY

Name -	Mojahidul Hoque
S/o-	Kausarul Hoque
Village -	Taranagar
Panchayat -	Taranagar
P.O.-	Ilami
Dist -	Pakur (Jharkhand)
Age -	14 years



His pictures in words

Mojahidul Hoque comes from a very poor family in Taranagar panchayat. His father Kausarul Hoque is a social worker and family consist of eight members. Mojahidul Hoque was a student of U.M.S Taranagar. He has been very inattentive and busy only in playing with his friends and the neighbourhood. As a consequences he has been doing very badly in school. Meantime FACE has opened Remedial centres and his father has got him admitted at the centre on May 2014. In the centre Mujahidul Hoque has started learning songs, poetry and also played games. He has encouraged to attend the remedial class in this way.

According to his father Kausarul Hoque the remedial centre of FACE has changed the life of his son. Mujahidul has an ambition of becoming a school teacher.

CASE STUDY

Name - Maleka Khatun
D/o- Mahaiman Momin
Village - Manirampur
Panchayat - Manirampur
Dist - Pakur (Jharkhand)
Age - 11 years



Her pictures in words

Maleka Khatun came from a very backward area and belongs to a family of uneducated parents. It was practice in the village to enroll the girls in the schools and leave them to lead their lives as before doing household chores. Maleka Khatun was same as the other girls and lived her own errant life.

FACE started CEEE remedial class for weak children. Maleka got enrolled along with 30 other children. Since Maleka had no interest in her studies, she started neglecting the remedial centre. After a Need Assessment was taken it was found out that Maleka did not know her Hindi or English alphabets. This was the situation of Maleka in Class-IV. This was reported to the Master Trainer. The trainer advice the teacher to teach Maleka in the 'Play and learn method'. She started doing her studies in proper manner.

She started learning Action songs, poetry using the TLM technique. Maleka now develop sudden urge to do her studies in the best possible ways. Maleka started also attending her formal school regularly. After one year of remedial class Maleka could read books in English and Hindi and even Bengali. She could also add and subtract.

In the Balmela she won prizes for drawing. Maleka Khatun is studying in Class-V and is praised by her teachers in her schools. Maleka has expressed her desire to be a social worker in future.

CASE STUDY

Name -	Sabina Yasmin
D/o-	Hebabul Shaikh
Village + P.O.	Prithivinagar
Panchayat -	Prithivinagar
Dist -	Pakur (Jharkhand)
Age -	8years



Her pictures in words

Sabina Yasmin is a student of Remedial class of CEEE which is being run by FACE. Sabina's father Hebabul Shaikh is a tailor and has a small shop. Her family consists of six members. Sabina Yasmin has studied in UHS, Anjana, Prithivinagar in class four. Her father has been busy in stitching clothes while her mother remained sick in bed. Sabina use to be busy with her household chores. Thus she could not devote her time in studies. It was impossible for Sabina to carry on her studies.

In the meantime FACE started the CEEE where remedial help has been provided to weak children in the Cluster Learning Centre (CLC). The need assessment has showed that Sabina is not fit even to study in class one. Then Sabina has started to come to the Remedial Centre regularly where she has learned new words, sentences and could even take dictation. Thus Sabina has undergone a vast change in her life with the help of the CLC.

Now her father Hebabul Shaikh is dreaming that his daughter Sabina will become a teacher in the future.

CASE STUDY



Name -	Mujhkera Bibi
Village -	Ishakpur
Panchayat -	Ishakpur
Dist -	Pakur (Jharkhand)

FACE

Her pictures in words

Mujhkera Bibi was born in a very poor family. Due to poverty she was married off early by her parents. Her in-laws were also very poor. She gave birth to six children- three boys and three girls. Unfortunately her husband met with an accident and lost one arm. Now her husband could work with only one hand and to add to her miseries her sister-in-law died leaving behind a child for her to look after.

The Female Literacy wing of FACE started its operations just then she got herself enrolled in the programme. Meanwhile her husband left for UAE. Now she had to look after the whole family in the absence of her husband. But she never failed to attend the FLI classes. She learnt the use of mobile, calculator, calendar etc. She could even attend to banking work to withdraw money sent by her husband. She dedicates her success to the Female Literacy wing of FACE.

CASE STUDY



Name - Selina Khatun
D/O - Sajiruddin Shaikh
Village - Chanchki
Dist - Pakur (Jharkhand)

FACE

Her pictures in words

Selina Khatun was very unfortunate to belong to a very poor family. They were three brothers and four sisters which made things more difficult. She had to join her mother in making Biris during that time FACE started the Female Literacy wing in her villages. She joined the literacy wing secretly without the knowledge of her father. One day her father came to know about this and went the centre and so her attending the class. Selina's fathers started to cry. He said that these tears of joy he infect encouraged to study more. She could add, subtract and write small sentences and could understand then. Selina used to buy paper and would make pictures of flowers, leaves and insect etc. She was encouraged in her efforts buy the Female Literacy wing of FACE.

CASE STUDY



Name - Surmila Hansda
Village - Gokulpur
Dist - Pakur (Jharkhand)

FACE

Her pictures in words

Surmila Hansda grew up with the intention of educating herself. But the poor financial condition of her family could not allow her to study. Surmila was married three years ago and lived with her in-laws in Gokulpur. Meanwhile FACE wanted to open a Female Literacy centre. She immediately enrolled herself in the Gokulpur centre. Unfortunately after five months the attendance of women started decreasing. Undaunted by this fact, Surmila carried on with her literary pursuits all along. Soon others follow her example; More ladies joined up. By now Surmila could read story books, news paper and magazines. She could do multiplication and division and she was encouraged all the time by her husband. She had aspiration to educate her children also.

CASE STUDY



Name -	Maida Bibi
W/O -	Felu Sk
Village -	Sangrampur
Dist -	Pakur (Jharkhand)
Age -	37years

Her pictures in words

Maida Bibi is a member of Sangrampur Female Literacy Centre. Her Husband Felu Sk is a small time Biri worker. Maida Bibi claims that she has been married of at a very early age. She enrolled herself and started attending the class of the Sangrampur Female Literacy centre has opened only last year. In spite of the fact that she had four children to look after and that she is 37 years old, did not deter her from attending the centre. After joining the centre she learnt the use of calculator and keeps the account of her Biri business. She can read shorts stories and can deposit and withdraw money from a bank. Maida Bibi claims that she is yet to learn a lot from the centre. She has being chosen for the post of 'Sahiya' in her village.

CASE STUDY



Name -	Sirina Khatun
D/O -	Meraj Shaikh
Village + P.O.-	Sangrampur
Dist -	Pakur (Jharkhand)
Age -	10 years

Her picture in words

Sirina Khatun is a young girl of 10 years. When she has been five years old her mother passed away. At that time she has been studying in Class-II. Her step-mother has been very wicked and use to torture her and stop her from going to school and ask her to join the Biri-making trade. Sirina has been a very simple girl and soon forgot what she has learnt in her school. When the Girl Child Education Centre opened she immediately enroll herself. She has started attending the centre regularly but her step-mother always has prevented her from attending the classes. But she has carried on her studies as before. Although she was a first generation learner but can pick up the lessons very fast and managed all her subjects very well. Her behaviour has improved with her education. She has become more disciplined and helps step mother's also and her mother is also very happy with her. We can claim that IIMPACT has created a wonderful student in Sirina. This is a great achievement for her. The teachers of Sirina dreams that one day will become a health professional like nurse or doctor.

CASE STUDY



Name -	Lotunjera Khatun
D/O -	Ajijul Shaikh
Village -	Ranipur
P.O.-	Sangrampur
Dist -	Pakur (Jharkhand)
Age -	12 years

Her pictures in words

Lotunjera Khatun was the eldest child in her family. Her parents were uneducated but still they wanted Lotun to study in school. But that was not to be because Lotun was very obstinate and bad tempered. She used to fight with her friends, she was extremely dirty and never cleaned up and she never went to study. When the Girl Child Learning Centre (GCLC) wing opened in her village she never enrolled herself with the other children. As a result she was left alone and finally she was forced to join the GCLC. She started attending the centre right from the very first day of enrolment and dedicatedly started attending regular classes. She started obeying the rules of the centre and also give due respect to her elders. Thus she underwent a complete transformation. Lotunjera is presently studying in Class-II and is doing very well.

CASE STUDY



Name -	Saheda Khatun
D/O -	Nuruddin Shaikh
Village -	Fatehpur
P.O. -	Rahaspur
Dist -	Pakur (Jharkhand)
Age -	8 years

Her pictures in words

At the beginning Saheda Khatun was enrolled by her parents in the Anganbari madarsa. But she was never serious in her studies and was a very obstinate and unruly child. She used to disturb her classmates in school.

At present she had enrolled with a Girl Child Learning Centre (GCLC) at Fatehpur along with thirty other children. After six months she started showing some changes and progress. She became regular and totally engrossed in her studies. Sahida is now Class-II level 6 and doing very well.

CASE STUDY



Name -	Sabina Khatun
D/O -	Matibur Rahman
Village -	Ilami
P.O. -	Ilami
Dist -	Pakur (Jharkhand)
Age -	8 years

Her pictures in words

Sabina Khatun lived with five other siblings. Her father and mother both were uneducated. She herself was very unruly, uncouth and grew up a very wild child. She never went to any school. Although the Girl Child Learning Centre (GCLC) had opened just next to her home she never got herself enrolled. But after seeing the other children attending classes at the centre she also started going to the centre. After sometime she developed a very strong urge to study and started doing very well in her studies. Although she was very unruly and ill tempered girl, she was controlled and changed by the teachers at the centre. Today Sabina had been studying in Class-II level 6 and is doing very well. She had been a favourite of her friends, parents and teachers.

CASE STUDY



Name - Mamtaj Khatun
D/O - Late Giasuddin Shaikh
Village - Anjana
P.O. - Prithivinagar
Dist - Pakur (Jharkhand)
Age - 7 years

Her pictures in words

Mamtaj Khatun came from a very poor family in the village where she lived with her mother, brothers and sisters. Unfortunately Mamtaj lost her father at a very early age. As a result she did not get the attention of her parents and grew up to be a very obstinate and unruly child. She never went to any school like her friends.

After sometime Girl Child Learning Centre (GCLC) opened up in her village. She never enrolled herself like the other girls. One day she caught the attention of the GCLC trainer. she went with Mamtaj to her home and spoke to her mother and finally she was enrolled. She liked to sing and was encouraged by her trainer along with her studies. She had been now studying in Class-II level 5 and passed with high marks. Her mother had been very encouraged with her result and wanted her to continue with her studies.

CASE STUDY



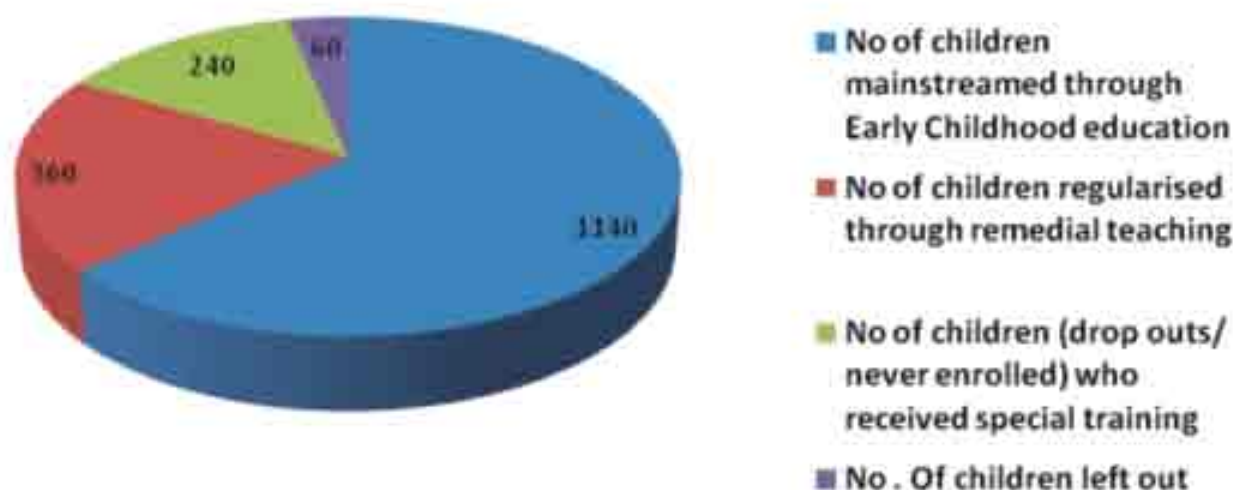
Name - Tammana Khatun
D/O - Nureshlam Sk
Village - Prithivinagar
P.O. - Prithivinagar
Dist - Pakur (Jharkhand)
Age - 8 years

Her pictures in words

Tammana Khatun came from a middle class family. Her father was literate and even her other brothers and one sister were attending school. But Tammana Khatun was an exception in the family. She never studied and spent her time roaming in the village. Her friend Firdausi was a student of the Girl Child Learning centre (GCLC). She encouraged Tammana Khatun to join the centre which Tammana did. She started attending the regular class. Today Tammina had been considered a good student, good in her studies, sports and singing. When the teacher of the centre met her mother she expressed her desire that Tammana should continue with her studies and become a teacher. Tammana is a student of Class-II level5.

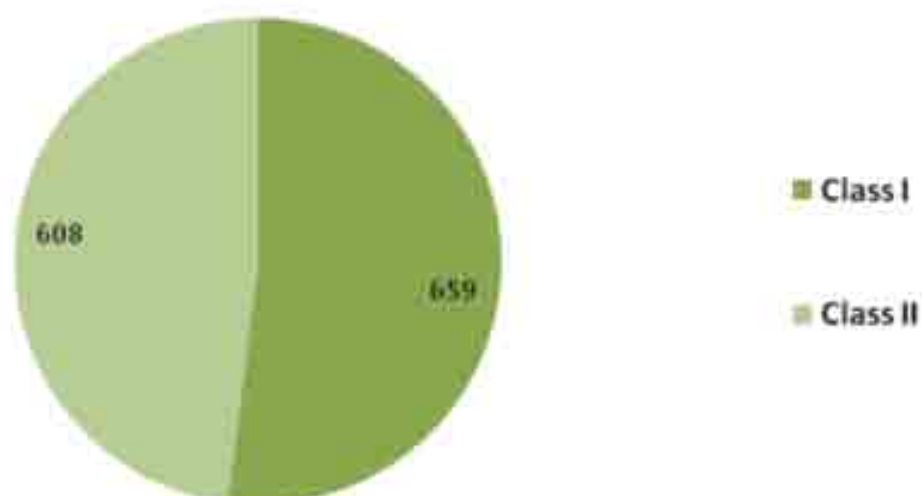
(B) Graphical Presentation

Achievements of Elementary Education(EE)



FACE

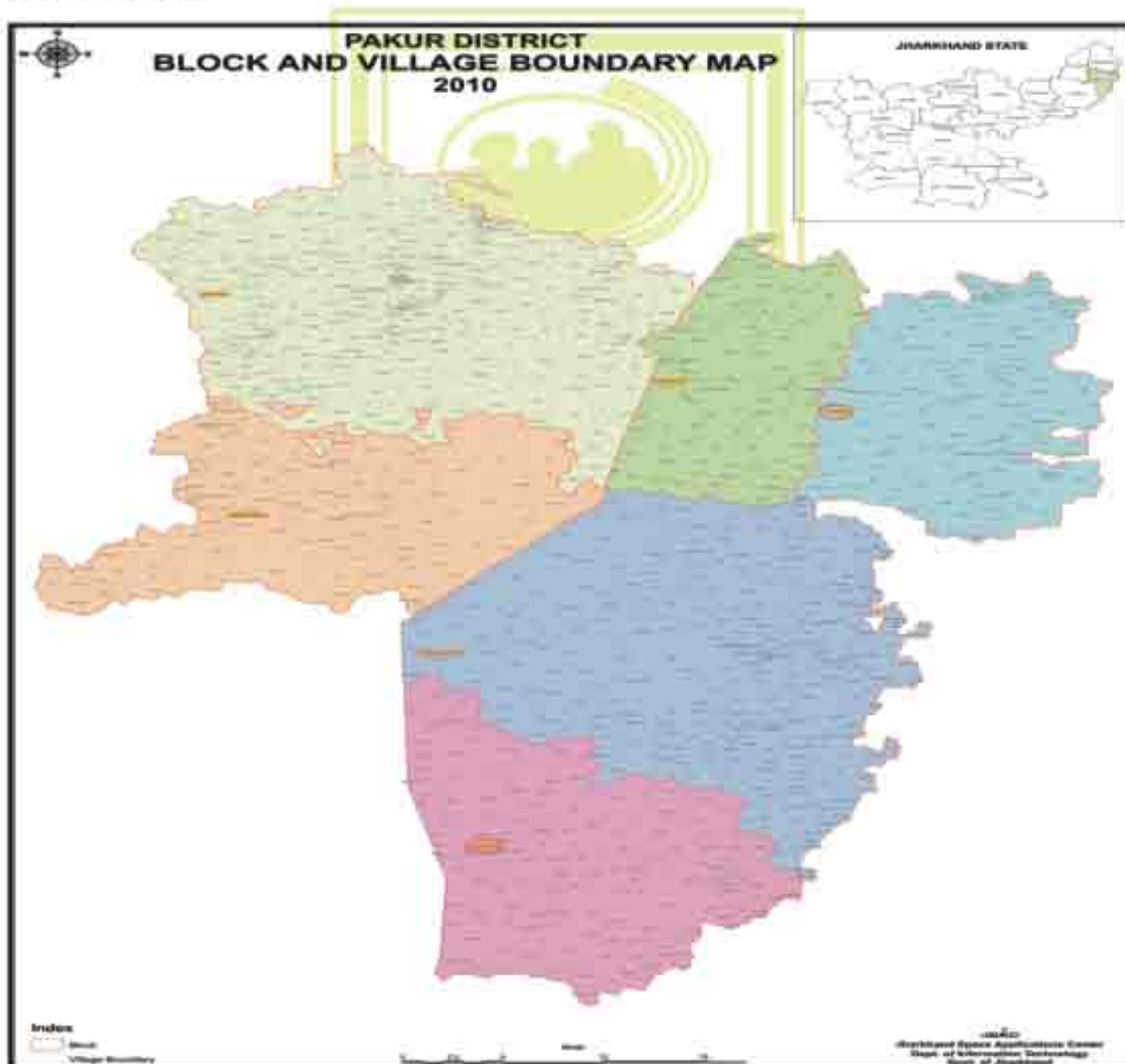
Acheivements of Girl Child Learning Centres



Achievements of Functional literacy for women



Coverage area-



FACE deeply acknowlege the support of the following Donor Agencies & organization:

- 1. Tata Education Trust, Mumbai**
- 2. IIMAPCT, Gurgaon**
- 3. Tata Social Welfare Trust, Mumbai**
- 4. Jharkhand State Livelihood Promotion Society (JSLPS), Ranchi**
- 5. Ministry of women & Child development Govt. of India and
(CHILDLINE India Foundation)**
- 6. Aakalipur Ram Krishna Mission, west Bengal**
- 7. Nirantar Trust, New Delhi**
- 8. NABARD West Bengal & Jharkhand**
- 9. CINI, Jharkhand**
- 10. Pratham (ASER) Jharkhand**



Transparency & Disclosure :

Sl. No.	Name	Designation	Gross Remuneration under project base work
1	Mr. Sharique Khan	President	Zero
2	Mr. Vidyasagar Choudhary	Vice-President	Zero
3	Smt. Ritu Pandey	Secretary	3,94,500/-
4	Mr. Debora Sinha	Treasurer	Zero
5	Mr. Ratan Singh	Member	Zero
6	Mr. Birendra Pathak	Member	Zero
7	Mr. Chanchal Jha	Member	Zero
8	Smt. Rosa Soren	Member	33,000/-
9	Smt. Atryee Chandra	Member	Zero

Accountability and Transparency:

No travel and other reimbursements have been made to any board member during the board meeting.

Highest paid salary and lowest paid salary under project base budget by the directive of the funding organization.

Highest paid Rs. = ☐ 16,500 /- Per month

Lowest paid Rs. = ☐ 1100 /- Per month

Staff Details : (as at march 31st, 2014)

Gender	Paid full time	Paid part time	Paid casual time	Unpaid Volunteers
Male	51	Nil	05	1000
Female	68	Nil	05	700
Total	119	Nil	10	1700

Distribution of staff according to salary levels (as March 31st, 2014)

Slab of Gross salary (<input type="checkbox"/>) Plus benefits paid staff	Male	Female	Total
< 2000	12	15	27
2001-5000	11	68	79
5001-10000	10	00	10
10001-20000	01	00	01
20001-30000	01	00	01
30000 >	00	01	01

Total Cost of National Travel by all staff during the year: ☐ 3,32,180.00/-

Total Cost of International Travel by all staff during the year : NIL

Media Coverage

‘बच्चों का बहुमुखी विकास करना उद्देश्य’

प्रा. कपूर



प्रा. कपूर के द्वारा आयोजित कार्यक्रम में बच्चों का बहुमुखी विकास करना उद्देश्य था। कार्यक्रम में बच्चों को विभिन्न खेलों और गतिविधियों के माध्यम से शिक्षित किया गया।

मूल्यांकन परीक्षा का आयोजन

प्रा. कपूर। स्वयंसेवी संस्था फेस के द्वारा रविवार को रामपुर उच्च विद्यालय में मुक्तिकर्मी मूल्यांकन परीक्षा का आयोजन किया गया। इस परीक्षा को महिला

सशक्तिकरण के उद्देश्य से प्रायोजित किया गया था। इसमें फेसकुरु नाम की 38 महिलाओं ने भाग लिया। रविवार को हिंदी एवं गणित विषय की परीक्षा भी हुई।

महिला साक्षरता व स्वास्थ्य पर कार्यशाला

प्रा. कपूर। फेस संस्था के द्वारा किया कार्यक्रम में महिला साक्षरता एवं स्वास्थ्य पर प्रकाश डालकर महिलाओं को शिक्षित करने का उद्देश्य था। कार्यक्रम में महिलाओं को विभिन्न खेलों और गतिविधियों के माध्यम से शिक्षित किया गया।

प्रा. कपूर की अध्यक्षता में आयोजित कार्यशाला में महिलाओं को विभिन्न खेलों और गतिविधियों के माध्यम से शिक्षित किया गया। कार्यक्रम में महिलाओं को विभिन्न खेलों और गतिविधियों के माध्यम से शिक्षित किया गया।

बच्चों ने दिखायी प्रतिभा

प्रा. कपूर



प्रा. कपूर के द्वारा आयोजित कार्यक्रम में बच्चों ने अपनी प्रतिभा दिखायी। कार्यक्रम में बच्चों को विभिन्न खेलों और गतिविधियों के माध्यम से शिक्षित किया गया।

स्वयं सेवी संस्थाओं ने चलाया मतदाता जागरूकता अभियान

प्रा. कपूर। भारत प्रगति के इसका मूल उद्देश्य है जनसंख्या को मतदाता के रूप में तैयार करना। स्वयंसेवी संस्थाओं ने मतदाता जागरूकता अभियान चलाया।

स्वयंसेवी संस्थाओं ने मतदाता जागरूकता अभियान चलाया। कार्यक्रम में मतदाताओं को विभिन्न खेलों और गतिविधियों के माध्यम से शिक्षित किया गया।

अब सेविकाएं देंगी आंगनवाड़ी में बच्चों को बेहतर शिक्षा

प्रा. कपूर



अब सेविकाएं देंगी आंगनवाड़ी में बच्चों को बेहतर शिक्षा। कार्यक्रम में बच्चों को विभिन्न खेलों और गतिविधियों के माध्यम से शिक्षित किया गया।

वचन की आदत डालें महिलाएं

प्रा. कपूर



वचन की आदत डालें महिलाएं। कार्यक्रम में महिलाओं को विभिन्न खेलों और गतिविधियों के माध्यम से शिक्षित किया गया।

शिशु सप्ताह को लेकर कार्यशाला

प्रा. कपूर



शिशु सप्ताह को लेकर कार्यशाला। कार्यक्रम में बच्चों को विभिन्न खेलों और गतिविधियों के माध्यम से शिक्षित किया गया।

प्रा. कपूर अपडेट

समाचार खरी देखनाल से घटेनी शिशु मृत्यु-कर



प्रा. कपूर अपडेट। समाचार खरी देखनाल से घटेनी शिशु मृत्यु-कर। कार्यक्रम में बच्चों को विभिन्न खेलों और गतिविधियों के माध्यम से शिक्षित किया गया।

बाल मेला व सांस्कृतिक कार्यक्रम का आज

प्रा. कपूर। स्वयं सेवी संस्था फेस द्वारा आयोजित बाल मेला व सांस्कृतिक कार्यक्रम का आज। कार्यक्रम में बच्चों को विभिन्न खेलों और गतिविधियों के माध्यम से शिक्षित किया गया।

छात्रांकदे सह बलि गैला का आयोजन

000000 000000

A black and white photograph showing three women seated at a table. The woman on the left is looking towards the center. The woman in the middle is wearing glasses and looking down at a document on the table. The woman on the right is looking towards the center. There are microphones and papers on the table.

• **1997** – 1998

1. The first part of the text discusses the importance of maintaining accurate records of all transactions, including sales, purchases, and expenses. It emphasizes that proper record-keeping is essential for determining the correct amount of tax liability.

THE



Table 1. Continued

the company's business. They would like to see the company grow and expand its operations into new markets and products. They would like to see the company become a leader in its industry and a global company. They would like to see the company become a public company and list on the New York Stock Exchange. They would like to see the company become a household name and a household word. They would like to see the company become a part of the American dream and a part of the American way of life. They would like to see the company become a part of the American future and a part of the American hope for the future.

 $\pm 1.0\%$ (1.0% of 100%)

more difficult to get things done and to get them done more efficiently than they were before. I think that's the main reason why we're not doing as well as we should be doing.

...the ...
...the ...
...the ...
...the ...
...the ...



Page 10 of 10

the 1990s, the number of people who have been infected with HIV has increased significantly. In the United States, the number of people who have been infected with HIV has increased from about 100,000 in 1980 to over 1 million in 1995. In the United Kingdom, the number of people who have been infected with HIV has increased from about 10,000 in 1980 to over 100,000 in 1995. In the United States, the number of people who have died from AIDS has increased from about 10,000 in 1980 to over 100,000 in 1995. In the United Kingdom, the number of people who have died from AIDS has increased from about 1,000 in 1980 to over 10,000 in 1995.

[illegible][illegible][illegible]

1990

Figure 1 shows a typical scene in the laboratory where a participant is asked to perform a visual search task. The participant is seated at a table, looking at a screen displaying a target stimulus. The experimenter is standing behind the participant, observing the task. The participant is instructed to respond by pressing a button on the table.

प्राकृतिक धर्मः नवप्रमाणम्

इस अभ्यास को
मानवारी स्वयंसेवी
संस्था केस की सचिवालय
अनुमोदित है।

TABLE 1. Summary of the study design and data collection.

[illegible]

Financial Details (Audit Report 2013-14)

Chowdhury Basu & Ray

CHARTERED ACCOUNTANTS

12, Chowringhee Square, Kolkata - 700 069 ■ Phone : +91-33-2248 6424

Fax : +91-33-2248 6423 ■ e-mail : office@cacbr.com / cbrcs@cacbr.com

AUDITOR'S REPORT

We have audited the attached Balance Sheet of **FOUNDATION FOR AWARENESS COUNSELLING & EDUCATION (FACE)**, At:- Pakur, Dist. :- Pakur, (JHARKHAND) as at 31st March 2014 and also the Income & Expenditure A/c for the period ended on that date annexed thereto on the basis of books of accounts maintained and produced by the SOCIETY, for our verification. These financial statements are the responsibility of the SOCIETY. Our responsibility is to express an opinion on these financial statements based on our audit.

We conducted our audit in accordance with auditing standards generally accepted in India. Those standards require that we plan and perform the audit to obtain reasonable assurance about whether the financial statements are free of material misstatement. An audit includes examining on the test basis evidence supporting the amounts disclosures in the financial statements. An audit also includes assessing the accounting principles used and significant estimates made by the SOCIETY as well as evaluating the overall financial statement presentation. We believe that our audit provides a reasonable basis for our opinion.

We report that:

1. We have obtained all the information and explanation, which to the best of our knowledge and belief were necessary for the purpose of audit.
2. In our opinion, proper books of accounts as required by law have been kept by the SOCIETY as it appears from our examination of such books.
3. The Consolidated Balance Sheet and Consolidated Income & Expenditure account referred to in this report are in agreement with books of accounts.
4. In our opinion and to the best of our information and explanation given to us, the said Balance Sheet and Income & Expenditure A/c given a true & fair view.
 - a. In the case of the Balance Sheet of the state of affairs under **FOUNDATION FOR AWARENESS COUNSELLING & EDUCATION (FACE)** as at 31st March 2014.
 - b. In so far it relates to Income & Expenditure A/c of under the scheme excess of income over expenditure for the period ended on that date.

For Chowdhury Basu & Ray



Place: Kolkata.

Dated: 30th MAY 2014

Sri Saibal Ghosh

Sri Saibal Ghosh, Partner
Chartered Accountants
Membership No.055319

● Also At NEW DELHI ●

FOUNDATION FOR AWARENESS COUNSELLING AND EDUCATION(FACE)
AT+P.O:PAKUR,RAIPARA,DIST: PAKUR, 816107(JHARKHAND)
REG.NO.192 DT.14.01.02 UNDER THE ACT.XXI 1860
REG.NO.12A-30/2005-06/2219-21 UNDER 12A OF I.T.ACT.,1961,
FCRA Reg.No:- 337780015

PAN NO.- AAAAF0410E

CONSOLIDATED BALANCE SHEET AS AT 31ST. MARCH,2014

<u>LIABILITIES</u>	Amount Rs. P.	Amount Rs. P.
General Fund:		
FACE (Main)	460,202.30	
JSLPS - NRLP	2,078.29	
IIMPACT	768,959.30	
FACE Kolkata	8,741.00	
FCRA	1,291.66	
TET	3,985,735.96	
TSWT	538,237.30	5,765,245.81
Loan Fund:		
Childline		85,000.00
Liabilities for Expenses:		
TET (From JTT)	500.60	
A.Chatterjee (FACE Murshidabad)	10,001.00	10,501.60
Total Rs.		5,860,747.41
ASSETS		
Fixed Assets :		
FACE (Pakur)	424,685.00	
TET	50,430.00	
IIMPACT	7,200.00	
TSWT	37,181.00	519,496.00
Current Assets:		
Loans and Advances -		
FACE (Pakur)		23,110.00
Deficit Fund:		
Childline		83,041.00
Closing Balance:		
PMB with Pakur Branch S.B		
A/c no. 61190001000017071	19,479.30	
S.B.i, Pakur Branch, S.B		
A/C No. 11440440358	2,078.29	
UNION Bank, Pakur Branch		
A/c.No.621302010002477	1,959.00	
Syndicate Bank, Pakur Branch,with		
S.B A/c No. 75052200015254	3,935,803.56	
PNB, Pakur Branch, with S.B		
A/c No. 6119000100008950	501,025.30	
PNB, Pakur Branch,with S.B		
A/C. No. 6119000100017062	759,984.30	
C/F	5,220,329.75	625,647.00



Cond.....P/2

FOUNDATION FOR AWARENESS,
COUNSELLING AND EDUCATION-FACE
Treasurer
S. Pandey

FOUNDATION FOR AWARENESS COUNSELLING AND EDUCATION(FACE)
AT+P.O:PAKUR,RAJPARA,DIST: PAKUR, 816107(JHARKHAND)
REG.NO.192 DT.14.01.02 UNDER THE ACT.XXI 1860
REG.NO.12A-30/2005-06/2219-21 UNDER 12A OF I.T.ACT.,1961,
FCRA Reg.No:- 337780015

PAN NO.- AAAAF0410E

BALANCE SHEET AS AT 31ST. MARCH,2014

Page - 2

ASSETS

	Amount		Amount	
	Rs.	P.	Rs.	P.
B/F	5,220,329.75		625,647.00	
State Bank of Bikaner & Jaipur				
S.B. A/C. No. 61105375207	8,741.00			
S.B.L(FCRA A/c.) A/c no-11444935835	1,291.66		5,230,362.41	
<u>Cash in Hand:</u>				
FACE (Main)	2,929.00			
TET	3.00			
TSWT	31.00			
IIMPACT	1,775.00		4,738.00	
Total Rs.			5,860,747.41	

SIGNED IN TERMS OF OUR SEPARATE REPORT OF EVEN DATE ATTACHED HEREWITH

Dated: 30th.May,2014
 12,Chowringhee Square,
 Kolkata - 700069



For Chowdhury Basu & Ray
 Chartered Accountant.
Saibal Ghosh
 S. Ghosh (Partner)
 Membership No.055319

**FOUNDATION FOR AWARENESS,
 COUNSELING AND EDUCATION-FACE**

 President
  Secretary
  Treasurer

FOUNDATION FOR AWARENESS COUNSELLING AND EDUCATION(FACE)
AT+P.O:PAKUR,RAJPARA,DIST: PAKUR, 816107(JHARKHAND)
REG.NO.192 DT.14.01.02 UNDER THE ACT.XXI 1860
REG.NO.12A-30/2005-06/2219-21 UNDER 12A OF I.T.ACT.,1961,
FCRA Reg.No:- 337780015

PAN NO. - AAAAF0418B

CONSOLIDATED INCOME & EXPENDITURE A/C FOR THE YEAR ENDED 31ST MARCH, 2014

	Amount		Amount	
	Rs.	P.	Rs.	P.
INCOME				
By Grant Receipts during the year:				
IMPACT	3,103,753.00			
TSWT	612,000.00			
FACE Kolkata	5,850.00			
JSLPS-NRLP	1,012,363.00			
FACE	192,985.00			
TET	3,819,000.00		8,745,951.00	
By Donation			161,939.00	
By Scrap Sales				
TSWT	140.00			
FACE	300.00			
JSLPS-NRLP	27.00		467.00	
By S.B. Interest Receipts:				
S.B. interest(JSLPS-NRLP)	2,309.00			
S.B. interest (TET)	71,300.54			
S.B. interest (IMPACT)	4,900.00			
S.B. interest(TSWT)	16,078.00			
S.B. interest(FACE)	958.00			
S.B. interest(FACE Kolkata)	268.00			
S.B. interest(CHILDLINE)	152.00		95,965.54	
By Deficit Balances				
TSWT	505,286.70			
CHILDLINE	40,023.00			
JSLPS-NRLP	66,471.00		611,780.70	
			<u>9,616,103.24</u>	

EXPENDITURE

To Exp. Under IMPACT				
Bank Charges	528.70			
TLM	363,041.00			
Teacher Training	131,456.00			
Monthly Academic Meeting	15,261.00			
Centre Running Cost	11,927.00			
Management Cost	231,527.00			
Salary	1,748,500.00			
Training of Trainers	125,488.00		2,627,728.70	
To Exp. Under TSWT				
Personnel Salary Programme	609,512.00			
Personnel Salary Administrav	78,000.00			
Programme Cost	360,851.00			
Overhead Cost	75,787.00			
Bank Charges	285.70		1,124,435.70	
To Exp. Under JSLPS - NRLP				
Bank Charges	65.00			
Template & Information/Data Collection Cost	872,354.00			
Thematic Training Modules	152,345.00			
	<u>1,024,764.00</u>		3,752,164.40	

C/F : 1,024,764.00 3,752,164.40
Cond.....P/2

FOUNDATION FOR AWARENESS,
COUNSELING AND EDUCATION-FACE
 President  Secretary  Treasurer



FOUNDATION FOR AWARENESS COUNSELLING AND EDUCATION(FACE)
AT+P.O:PAKUR,RAJPARA,DIST: PAKUR, 815107(JHARKHAND)
REG.NO.192 DT.14.01.02 UNDER THE ACT.XXI 1860
REG.NO.12A-30/2005-06/2219-21 UNDER 12A OF I.T.ACT.,1961,
FCRA Reg.No:- 337780015

PAN NO:- AAAAF9410E

CONSOLIDATED INCOME & EXPENDITURE A/C FOR THE YEAR ENDED 31ST.MARCH,2014

Page - 2

	B/F:	1,024,764.00	3,752,164.40
Establishment of FI resource Person		18,571.00	
Programme management Cost		27,835.00	
Audit Fee		10,000.00	1,081,170.00
To <u>Exp. Under CHILDLINE</u>			
Administrative Expenses		34,426.00	
Client Related expenses		90.00	
District Level facilitation Cost		5,644.00	
Bank Charges		15.00	40,175.00
To <u>Exp. Under TET</u>			
Personnel Programme		1,557,500.00	
Personnel Administrative		215,900.00	
Programme Cost		927,601.50	
Overhead Cost		120,597.50	
Bank Charges		444.00	2,822,043.00
To <u>Exp. Under FACE</u>			
ASER Trg. Remuneration		27,200.00	
ASER Trg. Food		5,635.00	
ASER Trg. TLM		1,212.00	
ASER Trg. Travel		2,000.00	
Annual Report		21,000.00	
Office Expenses		2,825.00	
New Born Care Campaign		4,530.00	
Postage & Courier		1,206.00	
Coordination Meeting (Rich India)		2,250.00	
Repairing & Maintenance		64,714.00	
Stationery & Photocopying		1,533.00	
Reach Support Service Pvt.Ltd.		954.00	
Womens Sexual & Rep. Health		121,310.00	
Bank Charges		253.70	
Child Line Office Rent		4,800.00	
Travel		12,203.00	273,425.70
To <u>Depreciation on:</u>			
Exp. Under FACE		49,060.00	
Exp. Under TET		21,270.00	
Exp. Under TSWT		9,069.00	79,399.00
To <u>Unspent Balances</u>			
FACE		33,696.30	
FACE kolkata		6,118.00	
TET		1,046,987.54	
IMPACT		480,924.30	1,567,726.14
			<u>9,616,103.24</u>

SIGNED IN TERMS OF OUR SEPARATE REPORT OF EVEN DATE ATTACHED HEREWITH

Dated: 30th.May,2014
12,Chowringhee Square,
Kolkata - 700069



For Chowdhury Basu & Ray
Chartered Accountants.

S. Ghosh

S. Ghosh (Partner)
Membership No.055319

FOUNDATION FOR AWARENESS,
COUNSELLING AND EDUCATION-FACE
Treasurer
Secretary
President

FOUNDATION FOR AWARENESS COUNSELLING AND EDUCATION (FACE)
AT+P.O:PAKUR,RAIPARA,DIST: PAKUR, 816107(JHARKHAND)
REG.NO.192 DT.14.01.02 UNDER THE ACT.XXI 1860
REG.NO.12A-30/2005-06/2219-21 UNDER 12A OF I.T.ACT.,1961,
FCRA Reg.No:- 337780015

PAN NO. - AAAAF0410E

CONSOLIDATED RECEIPT & PAYMENT A/C FOR THE YEAR ENDED 31ST. MARCH,2014

	Amount		Amount	
	Rs.	P.	Rs.	P.
RECEIPT				
To Opening Balance at Bank:				
FACE - PNB, Pakur Branch, S.B				
A/c no. 61190001000017071	2,769.00			
FACE(Kolkata)-State Bank of Bihar & Jaipur				
S.B. A/C. No. 61105375207	2,623.00			
S.B.L.(FCRA A/c.), Pakur Bazar, S.B. A/c No-11444935835	1,000.00			
FACE Murshidabad,				
U.B.I, Berhampur, S.B. A/c No. 0229015054547	1,128.00			
IMPACT -PNB Pakur Branch, S.B. A/c No. 61190001000017062	284,112.00			
TET- Syndicate Bank, Pakur Branch, S.B. A/c No. 75052200015254	2,872,654.02			
TSWT - PNB, Pakur Branch, with S.B				
A/c No. 61190001000008950	992,762.00			
CHILDLINE - UNION Bank, Pakur Branch				
S.B. A/c No. 621302010002477	4,822.00			
JSLPS-NRLP S.B.I, Pakur Branch, S.B				
A/C No. 11440440358	67,709.29		4,229,579.31	
Opening Cash Balance				
FACE	215.00			
IMPACT	3,923.00			
JSLPS-NRLP	840.00			
TSWT	4,512.00			
CHILDLINE	7,160.00			
TET	3,895.00		20,545.00	
To Grant Receipts during the year:				
FACE	192,885.00			
TATA SOCIAL WELFARE TRUST(TSWT)	612,000.00			
JSLPS-NRLP	1,012,363.00			
TET	3,819,000.00			
IMPACT	3,103,753.00		8,740,101.00	
To S.B. Interest Receipts:				
FACE	958.00			
FACE (Murshidabad)	36.00			
FACE - Kolkata	268.00			
FCRA	291.66			
JSLPS-NRLP	2,309.00			
TSWT	16,078.00			
CHILDLINE INDIA FOUNDATION	152.00			
TET	71,300.54			
IMPACT	4,900.00		96,293.20	
LOAN				
IMPACT	35,000.00			
JSLPS-NRLP	90,000.00			
CHILDLINE INDIA FOUNDATION	30,000.00		155,000.00	

C/P :

13,241,518.51

Cond.....P/2



FOUNDATION FOR AWARENESS
COUNSELLING AND EDUCATION (FACE)
TET
Kolkata
Roudy
Treasurer

FOUNDATION FOR AWARENESS COUNSELLING AND EDUCATION(FACE)
AT+P.O:PAKUR,RAJPARA,DIST: PAKUR, 816107(JHARKHAND)
REG.NO.192 DT.14.01.02 UNDER THE ACT.XXX 1860
REG.NO.12A-30/2005-06/2219-21 UNDER 12A OF I.T.ACT.,1961.
FCRA Reg.No:- 337780015

PAN NO.- AAAAF0410E

CONSOLIDATED RECEIPT & PAYMENT A/C FOR THE YEAR ENDED 31ST. MARCH,2014

	Amount		Amount	
	Rs.	P.	Rs.	P.
Page - 2				
		B/F		13,241,518.51
To <u>Scrap Sales</u>				
ISLPS-NRIP		27.00		
TSWT		140.00		
FACE		300.00		467.00
To <u>Others</u>				
FACE (New Born Care)		470.00		
FACE (Donation)		161,939.00		
FACE (Kolkata)		5,850.00		168,259.00
Total Rs.				<u>13,410,244.51</u>

PAYMENT

By <u>Payment under FACE A/c</u>				
Childline India Foundation		7,000.00		
Battery		9,000.00		
Desk		30,000.00		
New Electric Conection		5,500.00		
Annual Report		21,000.00		
ASSER Trg.Remuneration		27,200.00		
ASSER Trg. Food		5,635.00		
ASSER Trg. TLM		1,212.00		
ASSER Trg. Travel		2,000.00		
Bank Charges		253.70		
Child Line Office Rent		4,800.00		
Liabilites for Expenses paid		12,996.00		
Meeting Reach India Trust		2,250.00		
New Born Care		5,000.00		
Office Expenses		2,825.00		
Postage & Courier		1,206.00		
Repairing & maintenance		64,714.00		
Stationery & photocopying		1,333.00		
Travel		12,203.00		
Reach Support Service Pvt.Ltd.		954.00		
Womens Sexual & Reproductive Health		121,310.00		338,391.70
By <u>Payment under TATA SOCIAL WELFARE TRUST(TSWT) A/c.</u>				
Bank Charges		285.70		
Overhead Cost		75,787.00		
Programme Cost		360,851.00		
Salary Administrative		78,000.00		
Salary Programme		609,512.00		1,124,435.70

C/F :

1,462,827.40
Cond.....P/3



FOUNDATION FOR AWARENESS
COUNSELING AND EDUCATION-FACE
Treasurer
[Signature]

FOUNDATION FOR AWARENESS COUNSELLING AND EDUCATION(FACE)
AT+P.O:PAKUR,RAIPARA,DIST: PAKUR, 816107(JHARKHAND)
REG.NO.192 DT.14.01.02 UNDER THE ACT.XXI 1860
REG.NO.12A-30/2005-06/2219-21 UNDER 12A OF I.T.ACT.,1961,
FCRA Reg.No:- 337780015

PAN NO. - AAAAF0410E

CONSOLIDATED RECEIPT & PAYMENT A/C FOR THE YEAR ENDED 31ST, MARCH, 2014

	Amount		Amount	
	Rs.	P.	Rs.	P.
Page - 3				
B/F:			1,462,827.40	
Payment under CHILDLINE INDIA				
FOUNDATION A/c.				
Audit Fee	3,000.00			
Bank Charges	15.00			
Administrative Expenses	31,426.00			
Client Related Expenses	90.00			
District Level Facilitation Cost	5,644.00		40,175.00	
Payment under JSLPS-NRLP A/c.				
Loan	90,000.00			
Audit Fee	10,000.00			
Bank Charges	65.00			
Establishment of FI Resource Centre	18,571.00			
Programme Management Cost	27,835.00			
S.T.I. Building and FI Product	1,501.00			
Template & Information	872,354.00			
Thematic Training	148,844.00		1,171,170.00	
Payment under TATA EDUCATION TRUST(TET) A/c.				
White board with stand and notice board	9,000.00			
Bank Charges	444.00			
C.L.C. for Bridge and remedial Education	344,216.50			
Fellowship for Volunteers for Continuing Education	25,000.00			
Honorarium-Administrative	215,900.00			
Honorarium-Programme	1,557,500.00			
Monitoring Review and Documentation	185,717.00			
Overhead Cost	120,597.50			
Preparatory Activities	61,622.50			
Residential Camps for Bridge and Remedial Education	11,200.00			
Training and Capacity Building	95,107.50			
School Education Programme	150,683.00			
School preparedness Activities with Children	54,055.00		2,831,043.00	
Payment under I IMPACT A/c.				
Loan	35,000.00			
Harddisk	7,200.00			
Bank Charges	528.70			
Centre Running Cost	11,927.00			
Monthly Academic Meetings	15,261.00			
Teacher Training	131,456.00			
Project Office Management & Monitoring Cost	231,527.00			
Salary	1,748,500.00			
T.M	363,041.00			
Training of trainers	125,488.00		2,669,928.70	
			8,175,144.10	



C/F:

Cond.....P/3

FOUNDATION FOR AWARENESS
COUNSELLING AND EDUCATION-FACE
Treasurer
Secretary
Member

FOUNDATION FOR AWARENESS COUNSELLING AND EDUCATION(FACE)
AT+P.O:PAKUR,RAJPARA,DIST: PAKUR, 816107(JHARKHAND)
REG.NO.192 DT.14.01.02 UNDER THE ACT.XXI 1860
REG.NO.12A-30/2005-06/2219-21 UNDER 12A OF I.T.ACT.,1961,
FCRA Reg.No:- 337780015

PAN NO. - AAAAF0410E

CONSOLIDATED RECEIPT & PAYMENT A/C FOR THE YEAR ENDED 31ST. MARCH,2014

	Amount		Amount	
	Rs.	P.	Rs.	P.
<u>Page - 3</u>				
	<u>B/F:</u>		8,175,144.10	
By Closing Balance at Bank :				
FACE - PNB with Pakur Branch S.B				
A/c no. 61190001000017071	19,479.30			
FACE(Kolkata)-State Bank of Bikaner & Jaipur				
S.B. A/C. No. 61105375207 with	8,741.00			
TSWT - PNB, Pakur Branch, with S.B.				
A/c No. 6119000100008950	501,025.30			
CHILDUNE - UNION Bank, Pakur Branch				
A/c No.621302010002477	1,959.00			
ISLPS-NRLP S.B.I, Pakur Branch, S.B.				
A/C No. 11440440358	2,078.29			
TET - Syndicate Bank, Pakur Branch,with				
S.B A/c No. 75052200015254	3,835,803.56			
IMPACT - PNB, Pakur Branch,with S.B				
A/C. No. 6119000100017062	759,984.30			
S.B.I.(Pakur,Bazra)Bank (FCRA A/c.)				
A/c no-11444935835	1,291.66		5,230,362.41	
Cash Balance				
FACE	2,929.00			
TSWT	31.00			
TET	1.00			
IMPACT	1,775.00		4,738.00	
Total Rs.			13,410,244.51	

SIGNED IN TERMS OF OUR SEPARATE REPORT OF EVEN DATE ATTACHED HERewith

Dated: 30th.May,2014
12,Chowringhee Square,
Kolkata - 700069



For Chowdhury Basu & Ray
Chartered Accountants.

S. Ghosh
S. Ghosh (Partner)
Membership No.055319

FOUNDATION FOR AWARENESS
COUNSELING AND EDUCATION-FACE

[Signature] President *[Signature]* Secretary *[Signature]* Treasurer

NOTES TO THE ACCOUNTS:-

(i) In the financial year 2002-03, land admeasuring 10 Cottahs out of total land of 7B.12K 9 Dhur Plot in Mouza Champadanga no.129 P.S. Pakur Sub Division and District Pakur was received as gift for furtherance of educational activities.

Again in the financial year 2005-06 a piece and parcel of land admeasuring more or less 8 Cottahs 5 Dhur Plot No.274 in Mouza Champadanga no.129 P.S. Pakur District Pakur was received as donation for furtherance of educational activities.

(ii) Depreciation on assets capitalized earlier as well as during the year has been calculated at the rates specified in Indian Income Tax Act., 1961.

(iii) The accounts are being maintained on cash basis.

(iv) Organization has followed Financial manual for the purpose of financial management & expenditure.



FOUNDATION FOR AWARENESS,
COUNSELING AND EDUCATION-FACE

 President  Secretary  Treasurer



"FACE Teams of Ongoing Projects"

ROSE DOES NOT NEED TO RECOMMEND ITS QUALITY,
IT ONLY SPREADS ITS FRAGRANCE AND
ITS FRAGRANCE IS ITS ULTIMATE MESSAGE.

-Mahatma Gandhi

"SUCCESS IS NEVER FINAL"

- Winston Churchill



**FOUNDATION FOR AWARENESS COUNSELING
AND EDUCATION (FACE)**

Rajapara, Pakur-816107

Jharkhand, India

☎ : 094311-65148, 093325-61924

E-mail : face197@rediffmail.com

ritupanday16@gmail.com

Website: www.faceindia.net